

Product Name: BinCARD Rabbit Polyclonal Antibody
Catalog #: APRab07567



Summary

Production Name	BinCARD Rabbit Polyclonal Antibody
Description	Rabbit Polyclonal Antibody
Host	Rabbit
Application	IHC,ELISA
Reactivity	Human,Mouse

Performance

Conjugation	Unconjugated
Modification	Unmodified
Isotype	IgG
Clonality	Polyclonal
Form	Liquid
Storage	Store at 4°C short term. Aliquot and store at -20°C long term. Avoid freeze/thaw cycles.
Buffer	Liquid in PBS containing 50% glycerol, 0.5% BSA and 0.02% New type preservative N.
Purification	Affinity purification

Immunogen

Gene Name	C9orf89
Alternative Names	C9orf89; Bcl10-interacting CARD protein; BinCARD
Gene ID	84270.0
SwissProt ID	Q96LW7.The antiserum was produced against synthesized peptide derived from human C9orf89. AA range:21-70

Application

Dilution Ratio	IHC 1:100-1:300 ELISA: 1:40000
Molecular Weight	

Background

function:Plays a role in inhibiting the effects of BCL10-induced activation of NF-kappa-B. May inhibit the phosphorylation

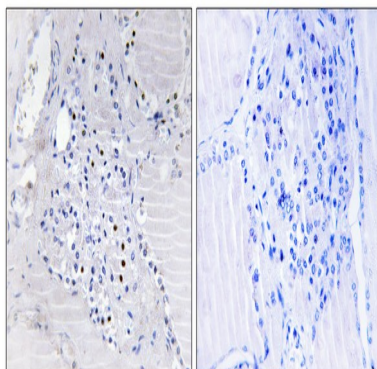
Product Name: BinCARD Rabbit Polyclonal Antibody
Catalog #: APRab07567



of BCL10 in a CARD-dependent manner.,PTM:Isoform 2 is phosphorylated upon DNA damage, probably by ATM or ATR.,similarity:Contains 1 CARD domain.,subcellular location:Co-expression with BCL10 induced translocation from nucleus to cytosol.,subunit:Associates with BCL10 by CARD-CARD interaction.,tissue specificity:Expressed in ovary, testis, placenta, skeletal muscle, kidney, lung, heart and liver (at protein level). Expressed in thymus and brain.,function:Plays a role in inhibiting the effects of BCL10-induced activation of NF-kappa-B. May inhibit the phosphorylation of BCL10 in a CARD-dependent manner.,PTM:Isoform 2 is phosphorylated upon DNA damage, probably by ATM or ATR.,similarity:Contains 1 CARD domain.,subcellular location:Co-expression with BCL10 induced translocation from nucleus to cytosol.,subunit:Associates with BCL10 by CARD-CARD interaction.,tissue specificity:Expressed in ovary, testis, placenta, skeletal muscle, kidney, lung, heart and liver (at protein level). Expressed in thymus and brain.,

Research Area

Image Data



Immunohistochemistry analysis of paraffin-embedded human thyroid gland tissue, using C9orf89 Antibody. The picture on the right is blocked with the synthesized peptide.

Note

For research use only.