

**Product Name: BET3 Rabbit Polyclonal Antibody**  
**Catalog #: APRab07535**



## Summary

<b>Production Name</b>	BET3 Rabbit Polyclonal Antibody
<b>Description</b>	Rabbit Polyclonal Antibody
<b>Host</b>	Rabbit
<b>Application</b>	WB,ELISA
<b>Reactivity</b>	Human,Mouse,Rat

## Performance

<b>Conjugation</b>	Unconjugated
<b>Modification</b>	Unmodified
<b>Isotype</b>	IgG
<b>Clonality</b>	Polyclonal
<b>Form</b>	Liquid
<b>Storage</b>	Store at 4°C short term. Aliquot and store at -20°C long term. Avoid freeze/thaw cycles.
<b>Buffer</b>	Liquid in PBS containing 50% glycerol, 0.5% BSA and 0.02% New type preservative N.
<b>Purification</b>	Affinity purification

## Immunogen

<b>Gene Name</b>	TRAPPC3
<b>Alternative Names</b>	TRAPPC3; BET3; CDABP0066; Trafficking protein particle complex subunit 3; BET3 homolog
<b>Gene ID</b>	27095.0
<b>SwissProt ID</b>	O43617.The antiserum was produced against synthesized peptide derived from human TRAPPC3. AA range:131-180

## Application

<b>Dilution Ratio</b>	WB 1:500 - 1:2000. ELISA: 1:5000..
<b>Molecular Weight</b>	22kD

**Product Name: BET3 Rabbit Polyclonal Antibody**  
**Catalog #: AP Rab07535**

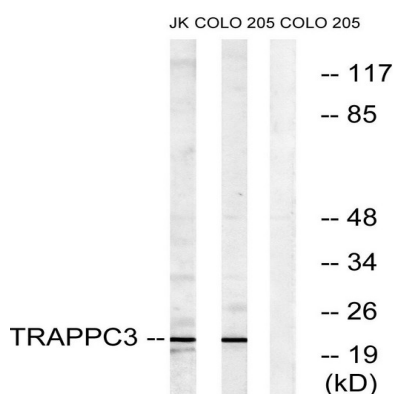


## Background

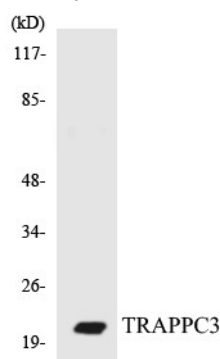
trafficking protein particle complex 3 (TRAPPC3) Homo sapiens This gene encodes a component of the trafficking protein particle complex, which tethers transport vesicles to the cis-Golgi membrane. The encoded protein participates in the regulation of transport from the endoplasmic reticulum to the Golgi apparatus. Alternative splicing results in multiple transcript variants. [provided by RefSeq, Aug 2012], function: May play a role in vesicular transport from endoplasmic reticulum to Golgi., similarity: Belongs to the TRAPP small subunits family. BET3 subfamily., subunit: Homodimer. Heterodimer with TRAPPC6A. Part of the multisubunit TRAPP (transport protein particle) complex.,

## Research Area

## Image Data



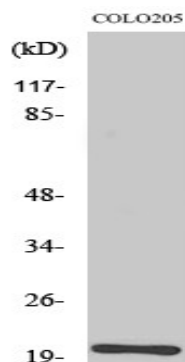
Western blot analysis of lysates from COLO and Jurkat cells, using TRAPPC3 Antibody. The lane on the right is blocked with the synthesized peptide.



Western blot analysis of the lysates from COLO205 cells using TRAPPC3 antibody.

**Product Name: BET3 Rabbit Polyclonal Antibody**  
**Catalog #: APRab07535**

---



Western Blot analysis of various cells using BET3 Polyclonal Antibody diluted at 1 : 500

### **Note**

For research use only.