

Product Name: BART1 Rabbit Polyclonal Antibody
Catalog #: APRab07468



Summary

Production Name	BART1 Rabbit Polyclonal Antibody
Description	Rabbit Polyclonal Antibody
Host	Rabbit
Application	WB,ELISA
Reactivity	Human,Mouse,Rat

Performance

Conjugation	Unconjugated
Modification	Unmodified
Isotype	IgG
Clonality	Polyclonal
Form	Liquid
Storage	Store at 4°C short term. Aliquot and store at -20°C long term. Avoid freeze/thaw cycles.
Buffer	Liquid in PBS containing 50% glycerol, 0.5% BSA and 0.02% New type preservative N.
Purification	Affinity purification

Immunogen

Gene Name	ARL2BP
Alternative Names	ARL2BP; BART; BART1; ADP-ribosylation factor-like protein 2-binding protein; ARF-like 2-binding protein; Binder of ARF2 protein 1
Gene ID	23568.0
SwissProt ID	Q9Y2Y0.The antiserum was produced against synthesized peptide derived from human ARL2BP. AA range:101-150

Application

Dilution Ratio	WB 1:500 - 1:2000. ELISA: 1:20000. Not yet tested in other applications.
Molecular Weight	25kD

Product Name: BART1 Rabbit Polyclonal Antibody
Catalog #: APRab07468

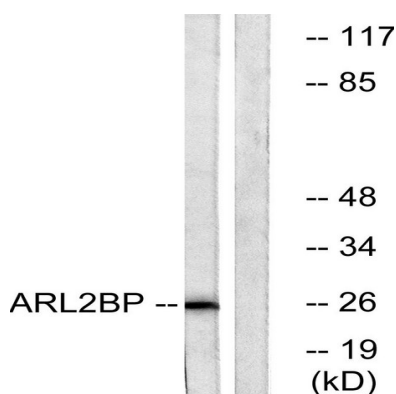


Background

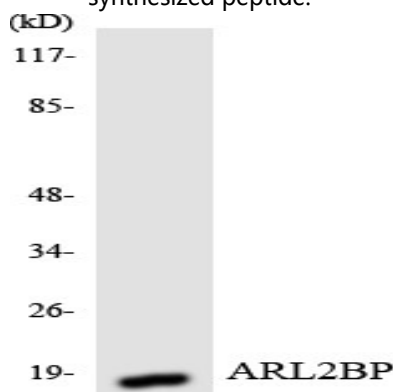
ADP-ribosylation factor (ARF)-like proteins (ARLs) comprise a functionally distinct group of the ARF family of RAS-related GTPases. The protein encoded by this gene binds to ARL2.GTP with high affinity but does not interact with ARL2.GDP, activated ARF, or RHO proteins. The lack of detectable membrane association of this protein or ARL2 upon activation of ARL2 is suggestive of actions distinct from those of the ARFs. This protein is considered to be the first ARL2-specific effector identified, due to its interaction with ARL2.GTP but lack of ARL2 GTPase-activating protein activity. [provided by RefSeq, Jul 2008],function:May play a role as an effector of the ADP-ribosylation factor-like protein 2, ARL2.,PTM:Phosphorylated upon DNA damage, probably by ATM or ATR.,similarity:Belongs to the ARL2BP family.,subunit:Interacts with GTP bound ARL2 and ARL3; the complex ARL2-ARL2BP as well as ARL2BP alone, binds to ANT1.,tissue specificity:Ubiquitous.,

Research Area

Image Data

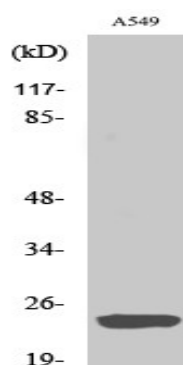


Western blot analysis of lysates from A549 cells, using ARL2BP Antibody. The lane on the right is blocked with the synthesized peptide.



Western blot analysis of the lysates from HUVEC cells using ARL2BP antibody.

Product Name: BART1 Rabbit Polyclonal Antibody
Catalog #: APRab07468



Western Blot analysis of various cells using BART1 Polyclonal Antibody

Note

For research use only.