

Product Name: BAIAP2L2 Rabbit Polyclonal Antibody
Catalog #: APRab07454



Summary

Production Name	BAIAP2L2 Rabbit Polyclonal Antibody
Description	Rabbit Polyclonal Antibody
Host	Rabbit
Application	WB,ELISA
Reactivity	Human,Mouse

Performance

Conjugation	Unconjugated
Modification	Unmodified
Isotype	IgG
Clonality	Polyclonal
Form	Liquid
Storage	Store at 4°C short term. Aliquot and store at -20°C long term. Avoid freeze/thaw cycles.
Buffer	Liquid in PBS containing 50% glycerol, 0.5% BSA and 0.02% New type preservative N.
Purification	Affinity purification

Immunogen

Gene Name	BAIAP2L2 BAIAP2L2; Brain-specific angiogenesis inhibitor 1-associated protein 2-like protein 2;
Alternative Names	BAI1-associated protein 2-like protein 2; Planar intestinal- and kidney-specific BAR domain protein; Pinkbar
Gene ID	80115.0
SwissProt ID	Q6UXY1.The antiserum was produced against synthesized peptide derived from human BAIAP2L2. AA range:111-160

Application

Dilution Ratio	WB 1:500 - 1:2000. ELISA: 1:40000
Molecular Weight	52kD

Product Name: BAIAP2L2 Rabbit Polyclonal Antibody
Catalog #: APRab07454

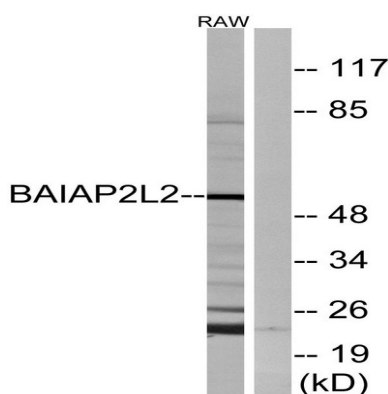


Background

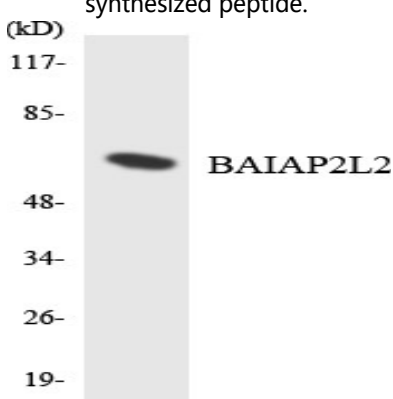
The protein encoded by this gene binds phosphoinositides and promotes the formation of planar or curved membrane structures. The encoded protein is found in RAB13-positive vesicles and at intercellular contacts with the plasma membrane. [provided by RefSeq, Dec 2012],domain:The IMD domain is predicted to have a helical structure. It may induce actin bundling and filopodia formation.,function:May function as an adapter protein .,similarity:Contains 1 IMD (IRSp53/MIM homology) domain.,similarity:Contains 1 SH3 domain.,

Research Area

Image Data



Western blot analysis of lysates from RAW264.7 cells, using BAIAP2L2 Antibody. The lane on the right is blocked with the synthesized peptide.



Western blot analysis of the lysates from HT-29 cells using BAIAP2L2 antibody.

Note

For research use only.