

## Summary

<b>Production Name</b>	BAF170 Rabbit Polyclonal Antibody
<b>Description</b>	Rabbit Polyclonal Antibody
<b>Host</b>	Rabbit
<b>Application</b>	WB,ELISA
<b>Reactivity</b>	Human,Mouse

## Performance

<b>Conjugation</b>	Unconjugated
<b>Modification</b>	Unmodified
<b>Isotype</b>	IgG
<b>Clonality</b>	Polyclonal
<b>Form</b>	Liquid
<b>Storage</b>	Store at 4°C short term. Aliquot and store at -20°C long term. Avoid freeze/thaw cycles.
<b>Buffer</b>	Liquid in PBS containing 50% glycerol, 0.5% BSA and 0.02% New type preservative N.
<b>Purification</b>	Affinity purification

## Immunogen

<b>Gene Name</b>	SMARCC2 SMARCC2; BAF170; SWI/SNF complex subunit SMARCC2; BRG1-associated factor 170;
<b>Alternative Names</b>	BAF170; SWI/SNF complex 170 kDa subunit; SWI/SNF-related matrix-associated actin-dependent regulator of chromatin subfamily C member 2
<b>Gene ID</b>	6601.0
<b>SwissProt ID</b>	Q8TAQ2.The antiserum was produced against synthesized peptide derived from human SMRC2. AA range:361-410

## Application

<b>Dilution Ratio</b>	WB 1:500 - 1:2000. ELISA: 1:10000. Not yet tested in other applications.
<b>Molecular Weight</b>	160kD

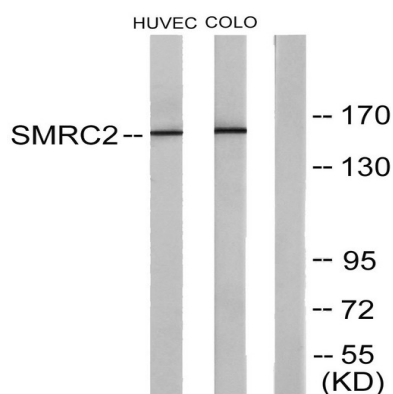
## Background

The protein encoded by this gene is a member of the SWI/SNF family of proteins, whose members display helicase and ATPase activities and which are thought to regulate transcription of certain genes by altering the chromatin structure around those genes. The encoded protein is part of the large ATP-dependent chromatin remodeling complex SNF/SWI and contains a predicted leucine zipper motif typical of many transcription factors. Alternatively spliced transcript variants encoding different isoforms have been found for this gene. [provided by RefSeq, Jul 2008],function:Involved in transcriptional activation and repression of select genes by chromatin remodeling (alteration of DNA-nucleosome topology). Can stimulate the ATPase activity of the catalytic subunit of these complexes. May be required for CoREST dependent repression of neuronal specific gene promoters in non-neuronal cells. Also involved in vitamin D-coupled transcription regulation via its association with the WINAC complex, a chromatin-remodeling complex recruited by vitamin D receptor (VDR), which is required for the ligand-bound VDR-mediated transrepression of the CYP27B1 gene.,similarity:Belongs to the SMARCC family.,similarity:Contains 1 SANT domain.,similarity:Contains 1 SWIRM domain.,subunit:Component of 6 multiprotein chromatin-remodeling complexes: Swi/Snf-A (BAF), Swi/Snf-B (PBAF), Brm, Brg1(I), WINAC and Brg1(II). Each of the five complexes contains a catalytic subunit (either SMARCA4 or SMARCA2), and at least SMARCE1, ACTL6A/BAF53A or ACTL6B/BAF53B, SMARCC1 and SMARCB1. Other subunits specific to each of the complexes may also be present. Component of the BAF complex, which includes at least actin (ACTB), ARID1A, ARID1B/BAF250, SMARCA2, SMARCA4/BRG1, ACTL6A/BAF53, ACTL6B/BAF53B, SMARCE1/BAF57, SMARCC1/BAF155, SMARCC2/BAF170, SMARCB1/SNF5/INI1, and one or more of SMARCD1/BAF60A, SMARCD2/BAF60B, or SMARCD3/BAF60C. In muscle cells, the BAF complex also contains DPF3. May also interact with the SIN3A histone deacetylase transcription repressor complex in conjunction with SMARCA2 and SMARCA4. Component of the WINAC complex, at least composed of SMARCA2, SMARCA4, SMARCB1, SMARCC1, SMARCC2, SMARCD1, SMARCE1, ACTL6A, BAZ1B/WSTF, ARID1A, SUPT16H, CHAF1A and TOP2B. Interacts with SMARD1.,tissue specificity:Ubiquitously expressed.,

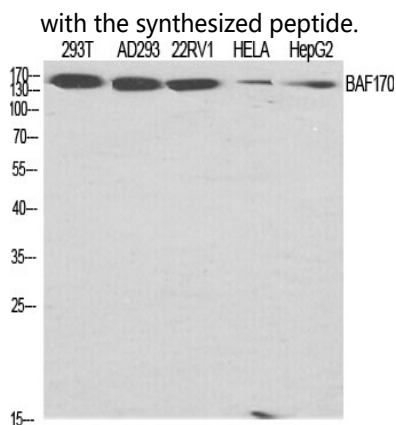
## Research Area

## Image Data

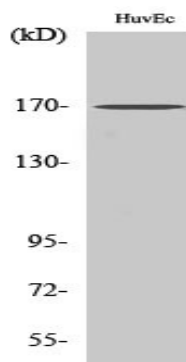
**Product Name: BAF170 Rabbit Polyclonal Antibody**  
**Catalog #: APRab07429**



Western blot analysis of lysates from HUVEC and COLO205 cells, using SMRC2 Antibody. The lane on the right is blocked with the synthesized peptide.



Western Blot analysis of various cells using BAF170 Polyclonal Antibody diluted at 1: 2000 cells nucleus extracted by Minute TM Cytoplasmic and Nuclear Fractionation kit (SC-003, Inventbiotech, MN, USA) .



Western Blot analysis of COLO205 cells using BAF170 Polyclonal Antibody diluted at 1: 2000 cells nucleus extracted by Minute TM Cytoplasmic and Nuclear Fractionation kit (SC-003, Inventbiotech, MN, USA) .

## Note

For research use only.