

Product Name: AW-1 Rabbit Polyclonal Antibody
Catalog #: APRab07385



Summary

Production Name	AW-1 Rabbit Polyclonal Antibody
Description	Rabbit Polyclonal Antibody
Host	Rabbit
Application	IF, WB, ELISA
Reactivity	Human, Rat, Mouse

Performance

Conjugation	Unconjugated
Modification	Unmodified
Isotype	IgG
Clonality	Polyclonal
Form	Liquid
Storage	Store at 4°C short term. Aliquot and store at -20°C long term. Avoid freeze/thaw cycles.
Buffer	Liquid in PBS containing 50% glycerol, 0.5% BSA and 0.02% New type preservative N.
Purification	Affinity purification

Immunogen

Gene Name	ZNF174
Alternative Names	ZNF174; ZSCAN8; Zinc finger protein 174; AW-1; Zinc finger and SCAN domain-containing protein 8
Gene ID	7727.0
SwissProt ID	Q15697. The antiserum was produced against synthesized peptide derived from human ZNF174. AA range: 201-250

Application

Dilution Ratio	WB 1:500 - 1:2000. IF 1:200 - 1:1000. ELISA: 1:10000. Not yet tested in other applications.
Molecular Weight	46kD

Background

function:Transcriptional repressor.,similarity:Belongs to the krueppel C2H2-type zinc-finger protein

family.,similarity:Contains 1 SCAN box domain.,similarity:Contains 3 C2H2-type zinc fingers.,subunit:Homodimer.,tissue

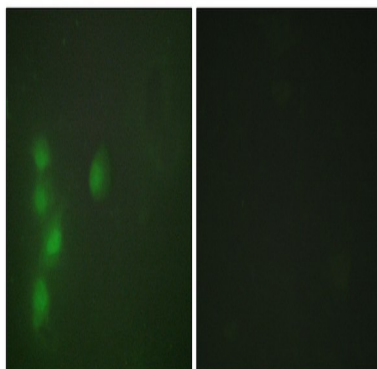
specificity:Expressed in a variety of organs, but most strongly in adult testis and ovary followed by small intestine, colon, prostate, thymus, spleen, pancreas, skeletal muscle, heart, brain and kidney. Also expressed in umbilical vein endothelial

cells, foreskin fibroblast and HEPG2 cells.,function:Transcriptional repressor.,similarity:Belongs to the krueppel C2H2-type zinc-finger protein family.,similarity:Contains 1 SCAN box domain.,similarity:Contains 3 C2H2-type zinc

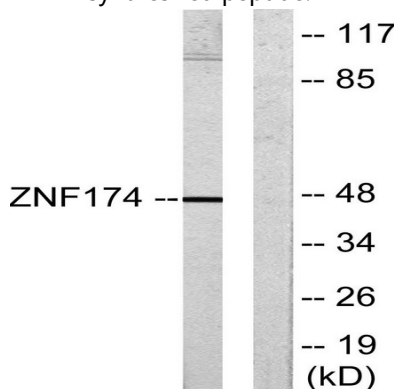
fingers.,subunit:Homodimer.,tissue specificity:Expressed in a variety of organs, but most strongly in adult testis and ovary followed by small intestine, colon, prostate, thymus, spleen, pancreas, skeletal muscle, heart, brain and kidney. Also expressed in umbilical vein endothelial cells, foreskin fibroblast and HEPG2 cells.,

Research Area

Image Data



Immunofluorescence analysis of HUVEC cells, using ZNF174 Antibody. The picture on the right is blocked with the synthesized peptide.

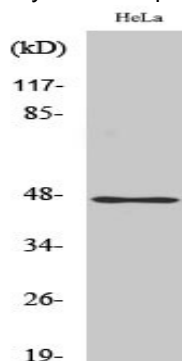


Western blot analysis of lysates from HeLa cells, using ZNF174 Antibody. The lane on the right is blocked with the

Product Name: AW-1 Rabbit Polyclonal Antibody
Catalog #: APRab07385



synthesized peptide.



Western Blot analysis of various cells using AW-1 Polyclonal Antibody

Note

For research use only.