

**Product Name: Aven Rabbit Polyclonal Antibody**  
**Catalog #: APRab07377**



## Summary

<b>Production Name</b>	Aven Rabbit Polyclonal Antibody
<b>Description</b>	Rabbit Polyclonal Antibody
<b>Host</b>	Rabbit
<b>Application</b>	WB,ELISA
<b>Reactivity</b>	Human,Monkey

## Performance

<b>Conjugation</b>	Unconjugated
<b>Modification</b>	Unmodified
<b>Isotype</b>	IgG
<b>Clonality</b>	Polyclonal
<b>Form</b>	Liquid
<b>Storage</b>	Store at 4°C short term. Aliquot and store at -20°C long term. Avoid freeze/thaw cycles.
<b>Buffer</b>	Liquid in PBS containing 50% glycerol, 0.5% BSA and 0.02% New type preservative N.
<b>Purification</b>	Affinity purification

## Immunogen

<b>Gene Name</b>	AVEN
<b>Alternative Names</b>	AVEN; Cell death regulator Aven
<b>Gene ID</b>	57099.0
<b>SwissProt ID</b>	Q9NQS1.The antiserum was produced against synthesized peptide derived from human AVEN. AA range:301-350

## Application

<b>Dilution Ratio</b>	WB 1:500 - 1:2000. ELISA: 1:20000
<b>Molecular Weight</b>	55kD

## Background

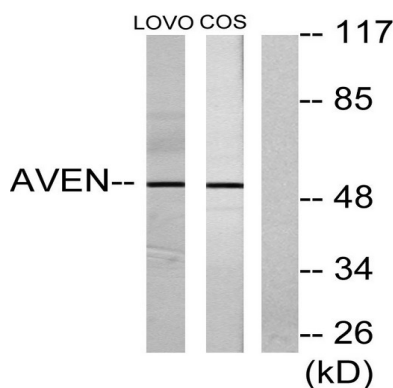
**Product Name: Aven Rabbit Polyclonal Antibody**  
**Catalog #: APRab07377**



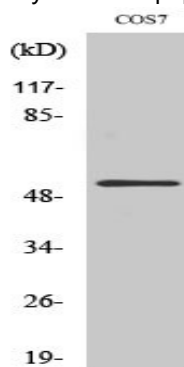
function:Protects against apoptosis mediated by Apaf-1.,subcellular location:Associated with intracellular membranes.,subunit:Binds Apaf-1, BCL-2 and BAD (Bcl-xl),tissue specificity:Highly expressed in testis, ovary, thymus, prostate, spleen, small intestine, colon, heart, skeletal muscle, liver, kidney and pancreas.,function:Protects against apoptosis mediated by Apaf-1.,subcellular location:Associated with intracellular membranes.,subunit:Binds Apaf-1, BCL-2 and BAD (Bcl-xl),tissue specificity:Highly expressed in testis, ovary, thymus, prostate, spleen, small intestine, colon, heart, skeletal muscle, liver, kidney and pancreas.,

## Research Area

## Image Data



Western blot analysis of lysates from COS7 and LOVO cells, using AVEN Antibody. The lane on the right is blocked with the synthesized peptide.



Western Blot analysis of various cells using Aven Polyclonal Antibody

## Note

For research use only.