

Product Name: ATPBD3 Rabbit Polyclonal Antibody
Catalog #: AP Rab07348



Summary

Production Name	ATPBD3 Rabbit Polyclonal Antibody
Description	Rabbit Polyclonal Antibody
Host	Rabbit
Application	WB,ELISA
Reactivity	Human,Rat,Mouse

Performance

Conjugation	Unconjugated
Modification	Unmodified
Isotype	IgG
Clonality	Polyclonal
Form	Liquid
Storage	Store at 4°C short term. Aliquot and store at -20°C long term. Avoid freeze/thaw cycles.
Buffer	Liquid in PBS containing 50% glycerol, 0.5% BSA and 0.02% New type preservative N.
Purification	Affinity purification

Immunogen

Gene Name	CTU1
Alternative Names	CTU1; ATPBD3; NCS6; Cytoplasmic tRNA 2-thiolation protein 1; ATP-binding domain-containing protein 3; Cancer-associated gene protein; Cytoplasmic tRNA adenylyltransferase 1
Gene ID	90353.0
SwissProt ID	Q7Z7A3.The antiserum was produced against synthesized peptide derived from human ATPBD3. AA range:291-340

Application

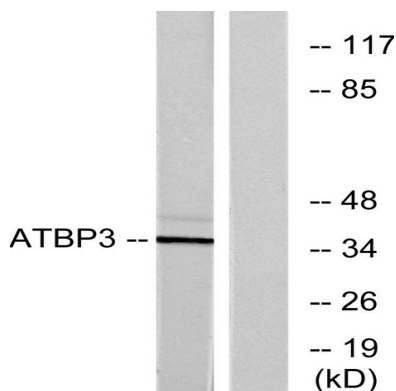
Dilution Ratio	WB 1:500 - 1:2000. ELISA: 1:20000
Molecular Weight	36kD

Background

function: Plays a central role in 2-thiolation of mcm(5)S(2)U at tRNA wobble positions of tRNA(Lys), tRNA(Glu) and tRNA(Gln). Directly binds tRNAs and probably acts by catalyzing adenylation of tRNAs, an intermediate required for 2-thiolation. It is unclear whether it acts as a sulfurtransferase that transfers sulfur from thiocarboxylated URM1 onto the uridine of tRNAs at wobble position., pathway: tRNA modification; 5-methoxycarbonylmethyl-2-thiouridine-tRNA biosynthesis., similarity: Belongs to the ttcA family. CTU1/NCS6/ATPBD3 subfamily., subunit: Component of a complex at least composed of URM1, CTU2/NCS2 and ATPBD3/NCS6. May form a heterodimer with CTU2/NCS2., function: Plays a central role in 2-thiolation of mcm(5)S(2)U at tRNA wobble positions of tRNA(Lys), tRNA(Glu) and tRNA(Gln). Directly binds tRNAs and probably acts by catalyzing adenylation of tRNAs, an intermediate required for 2-thiolation. It is unclear whether it acts as a sulfurtransferase that transfers sulfur from thiocarboxylated URM1 onto the uridine of tRNAs at wobble position., pathway: tRNA modification; 5-methoxycarbonylmethyl-2-thiouridine-tRNA biosynthesis., similarity: Belongs to the ttcA family. CTU1/NCS6/ATPBD3 subfamily., subunit: Component of a complex at least composed of URM1, CTU2/NCS2 and ATPBD3/NCS6. May form a heterodimer with CTU2/NCS2.,

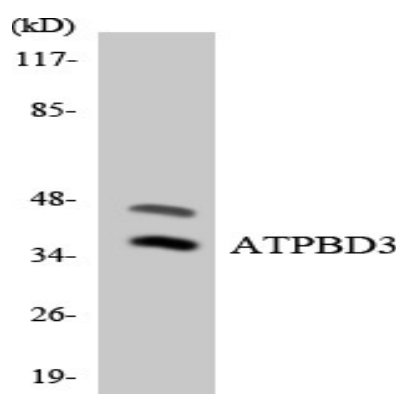
Research Area

Image Data



Western blot analysis of lysates from LOVO cells, using ATPBD3 Antibody. The lane on the right is blocked with the synthesized peptide.

Product Name: ATPBD3 Rabbit Polyclonal Antibody
Catalog #: APRab07348



Western blot analysis of the lysates from 293 cells using ATPBD3 antibody.

Note

For research use only.