

## Summary

<b>Production Name</b>	Atg16L2 Rabbit Polyclonal Antibody
<b>Description</b>	Rabbit Polyclonal Antibody
<b>Host</b>	Rabbit
<b>Application</b>	WB,ELISA
<b>Reactivity</b>	Human,Rat,Mouse

## Performance

<b>Conjugation</b>	Unconjugated
<b>Modification</b>	Unmodified
<b>Isotype</b>	IgG
<b>Clonality</b>	Polyclonal
<b>Form</b>	Liquid
<b>Storage</b>	Store at 4°C short term. Aliquot and store at -20°C long term. Avoid freeze/thaw cycles.
<b>Buffer</b>	Liquid in PBS containing 50% glycerol, 0.5% BSA and 0.02% New type preservative N.
<b>Purification</b>	Affinity purification

## Immunogen

<b>Gene Name</b>	ATG16L2
<b>Alternative Names</b>	ATG16L2; WDR80; Autophagy-related protein 16-2; APG16-like 2; WD repeat-containing protein 80
<b>Gene ID</b>	89849.0
<b>SwissProt ID</b>	Q8NAA4.The antiserum was produced against synthesized peptide derived from human ATG16L2. AA range:241-290

## Application

<b>Dilution Ratio</b>	WB 1:500 - 1:2000. ELISA: 1:20000
<b>Molecular Weight</b>	70kD

**Product Name: Atg16L2 Rabbit Polyclonal Antibody**  
**Catalog #: APRab07287**

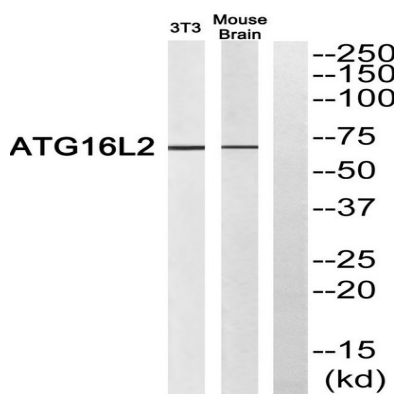


## Background

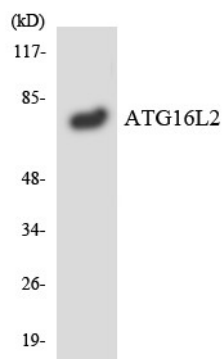
function: May play a role in autophagy., similarity: Belongs to the WD repeat ATG16 family., similarity: Contains 7 WD repeats., function: May play a role in autophagy., similarity: Belongs to the WD repeat ATG16 family., similarity: Contains 7 WD repeats.,

## Research Area

## Image Data



Western blot analysis of ATG16L2 Antibody. The lane on the right is blocked with the ATG16L2 peptide.



Western blot analysis of the lysates from RAW264.7 cells using ATG16L2 antibody.

## Note

For research use only.