

Product Name: Atg16 Rabbit Polyclonal Antibody
Catalog #: APRab07285



Summary

Production Name	Atg16 Rabbit Polyclonal Antibody
Description	Rabbit Polyclonal Antibody
Host	Rabbit
Application	WB
Reactivity	Human,Rat,Mouse

Performance

Conjugation	Unconjugated
Modification	Unmodified
Isotype	IgG
Clonality	Polyclonal
Form	Liquid
Storage	Store at 4°C short term. Aliquot and store at -20°C long term. Avoid freeze/thaw cycles.
Buffer	Liquid in PBS containing 50% glycerol, 0.5% BSA and 0.02% New type preservative N.
Purification	Affinity purification

Immunogen

Gene Name	ATG16L1
Alternative Names	ATG16L1; APG16L; Autophagy-related protein 16-1; APG16-like 1
Gene ID	55054.0
SwissProt ID	Q676U5.Synthesized peptide derived from Atg16 . at AA range: 60-140

Application

Dilution Ratio	WB 1:500-1:2000. ELISA: 1:5000.
Molecular Weight	70kD

Background

The protein encoded by this gene is part of a large protein complex that is necessary for autophagy, the major process by which intracellular components are targeted to lysosomes for degradation. Defects in this gene are a cause of susceptibility

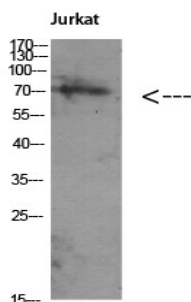
Product Name: Atg16 Rabbit Polyclonal Antibody
Catalog #: APRab07285



to inflammatory bowel disease type 10 (IBD10). Several transcript variants encoding different isoforms have been found for this gene.[provided by RefSeq, Jun 2010],disease:Genetic variations in ATG16L1 are associated with susceptibility to inflammatory bowel disease type 10 (IBD10) [MIM:611081]. IBD is characterized by a chronic relapsing intestinal inflammation. IBD is subdivided into Crohn disease (CD) and ulcerative colitis phenotypes. IBD10 individuals show the phenotype characteristic to CD. It may involve any part of the gastrointestinal tract, but most frequently the terminal ileum and colon. CD is commonly classified as autoimmune disease.,function:Plays an essential role in autophagy.,sequence caution:Wrong choice of CDS.,similarity:Belongs to the WD repeat ATG16 family.,similarity:Contains 7 WD repeats.,subcellular location:Localized to preautophagosomal structure (PAS) where it is involved in the membrane targeting of ATG5.,subunit:Homooligomer. Interacts with ATG5. Part of either the minor and major complexes respectively composed of 4 sets of ATG12-ATG5 and ATG16L1 (400 kDa) or 8 sets of ATG12-ATG5 and ATG16L1 (800 kDa),

Research Area

Image Data



Western Blot analysis of Jurkat using Antibody diluted at 1:1000. Secondary antibody was diluted at 1:20000

Note

For research use only.