
Summary

Production Name	ATG10 Rabbit Polyclonal Antibody
Description	Rabbit Polyclonal Antibody
Host	Rabbit
Application	IHC,ELISA
Reactivity	Human,Rat,Mouse

Performance

Conjugation	Unconjugated
Modification	Unmodified
Isotype	IgG
Clonality	Polyclonal
Form	Liquid
Storage	Store at 4°C short term. Aliquot and store at -20°C long term. Avoid freeze/thaw cycles.
Buffer	Liquid in PBS containing 50% glycerol, 0.5% BSA and 0.02% New type preservative N.
Purification	Affinity purification

Immunogen

Gene Name	ATG10 APG10L PP12616
Alternative Names	Ubiquitin-like-conjugating enzyme ATG10 (EC 6.3.2.-;Autophagy-related protein 10;APG10-like)
Gene ID	83734.0
SwissProt ID	Q9H0Y0.Synthetic peptide from human protein at AA range: 1-50

Application

Dilution Ratio	IHC-p 1:50-200, ELISA 1:10000-20000.
Molecular Weight	

Background

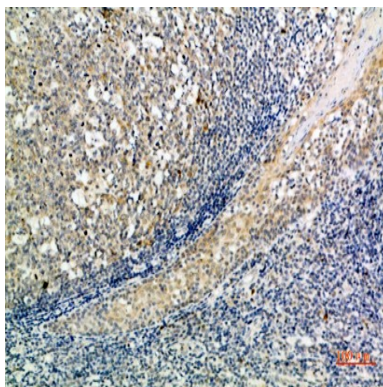
Product Name: ATG10 Rabbit Polyclonal Antibody
Catalog #: APRab07282



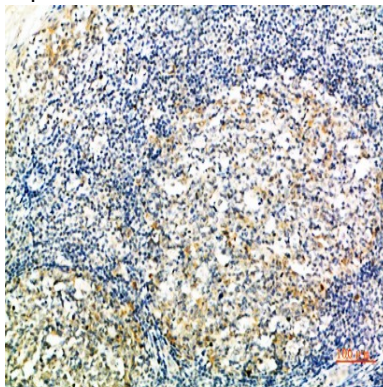
Autophagy is a process for the bulk degradation of cytosolic compartments by lysosomes. ATG10 is an E2-like enzyme involved in 2 ubiquitin-like modifications essential for autophagosome formation: ATG12 (MIM 609608)-ATG5 (MIM 604261) conjugation and modification of a soluble form of MAP-LC3 (MAP1LC3A; MIM 601242), a homolog of yeast Apg8, to a membrane-bound form (Nemoto et al., 2003 [PubMed 12890687]).[supplied by OMIM, Mar 2008],function:Plays a role in autophagy (By similarity). ATG12-conjugating enzyme (E2-like enzyme), likely serves as an ATG5-recognition molecule.,similarity:Belongs to the ATG10 family.,subunit:Interacts with MAP1LC3A. By interacting with MAP1LC3A, it plays a role in the conjugation of ATG12 to ATG5. Also able to directly interact either with ATG5 or ATG7.,

Research Area

Image Data



Immunohistochemical analysis of paraffin-embedded human-tonsil, antibody was diluted at 1:200



Immunohistochemical analysis of paraffin-embedded human-tonsil, antibody was diluted at 1:200

Note

For research use only.