

Product Name: ATF-7 Rabbit Polyclonal Antibody
Catalog #: APRab07281



Summary

Production Name	ATF-7 Rabbit Polyclonal Antibody
Description	Rabbit Polyclonal Antibody
Host	Rabbit
Application	WB,ELISA
Reactivity	Human,Mouse

Performance

Conjugation	Unconjugated
Modification	Unmodified
Isotype	IgG
Clonality	Polyclonal
Form	Liquid
Storage	Store at 4°C short term. Aliquot and store at -20°C long term. Avoid freeze/thaw cycles.
Buffer	Liquid in PBS containing 50% glycerol, 0.5% BSA and 0.02% New type preservative N.
Purification	Affinity purification

Immunogen

Gene Name	ATF7
Alternative Names	ATF7; ATFA; Cyclic AMP-dependent transcription factor ATF-7; cAMP-dependent transcription factor ATF-7; Activating transcription factor 7; Transcription factor ATF-A
Gene ID	11016.0
SwissProt ID	P17544.The antiserum was produced against synthesized peptide derived from human ATF7. AA range:41-90

Application

Dilution Ratio	WB 1:500 - 1:2000. ELISA: 1:20000
Molecular Weight	52kD

Product Name: ATF-7 Rabbit Polyclonal Antibody
Catalog #: APRab07281

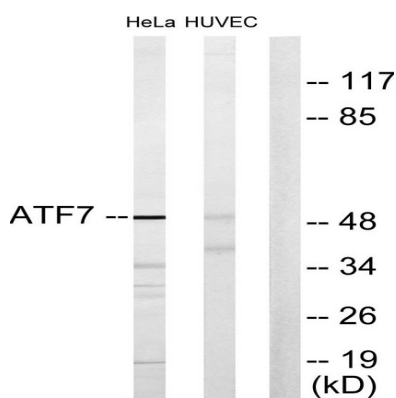


Background

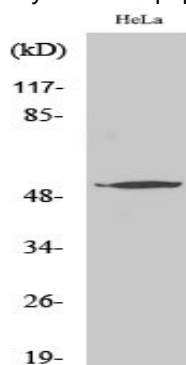
function: Binds the cAMP response element (CRE) (consensus: 5'-GTGACGT[AG][AG]-3'), a sequence present in many viral and cellular promoters., similarity: Belongs to the bZIP family., similarity: Contains 1 bZIP domain., similarity: Contains 1 C2H2-type zinc finger., subunit: Binds DNA as a dimer., function: Binds the cAMP response element (CRE) (consensus: 5'-GTGACGT[AG][AG]-3'), a sequence present in many viral and cellular promoters., similarity: Belongs to the bZIP family., similarity: Contains 1 bZIP domain., similarity: Contains 1 C2H2-type zinc finger., subunit: Binds DNA as a dimer.,

Research Area

Image Data



Western blot analysis of lysates from HeLa and HUVEC cells, using ATF7 Antibody. The lane on the right is blocked with the synthesized peptide.



Western Blot analysis of various cells using ATF-7 Polyclonal Antibody

Note

For research use only.