

Product Name: ATBF1 Rabbit Polyclonal Antibody
Catalog #: APRab07255



Summary

Production Name	ATBF1 Rabbit Polyclonal Antibody
Description	Rabbit Polyclonal Antibody
Host	Rabbit
Application	IHC,ELISA
Reactivity	Human,Mouse

Performance

Conjugation	Unconjugated
Modification	Unmodified
Isotype	IgG
Clonality	Polyclonal
Form	Liquid
Storage	Store at 4°C short term. Aliquot and store at -20°C long term. Avoid freeze/thaw cycles.
Buffer	Liquid in PBS containing 50% glycerol, 0.5% BSA and 0.02% New type preservative N.
Purification	Affinity purification

Immunogen

Gene Name	ZFHX3
Alternative Names	ZFHX3; ATBF1; Zinc finger homeobox protein 3; AT motif-binding factor; AT-binding transcription factor 1; Alpha-fetoprotein enhancer-binding protein; Zinc finger homeodomain protein 3; ZFH-3
Gene ID	463.0
SwissProt ID	Q15911.The antiserum was produced against synthesized peptide derived from human ZFHX3. AA range:761-810

Application

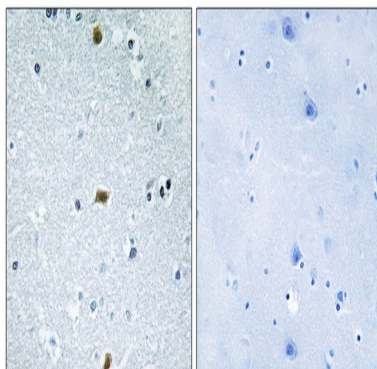
Dilution Ratio	IHC 1:100-1:300 ELISA: 1:10000
Molecular Weight	

Background

This gene encodes a transcription factor with multiple homeodomains and zinc finger motifs, and regulates myogenic and neuronal differentiation. The encoded protein suppresses expression of the alpha-fetoprotein gene by binding to an AT-rich enhancer motif. The protein has also been shown to negatively regulate c-Myb, and transactivate the cell cycle inhibitor cyclin-dependent kinase inhibitor 1A (also known as p21CIP1). This gene is reported to function as a tumor suppressor in several cancers, and sequence variants of this gene are also associated with atrial fibrillation. Multiple transcript variants expressed from alternate promoters and encoding different isoforms have been found for this gene. [provided by RefSeq, Sep 2009],function:Transcriptional activator that binds to the AT-rich core sequence of the enhancer element of the AFP gene.,PTM:Phosphorylated upon DNA damage, probably by ATM or ATR.,similarity:Contains 22 C2H2-type zinc fingers.,similarity:Contains 4 homeobox DNA-binding domains.,subunit:Interacts with FNBP3.,

Research Area

Image Data



Immunohistochemistry analysis of paraffin-embedded human brain tissue, using ZFH3 Antibody. The picture on the right is blocked with the synthesized peptide.

Note

For research use only.