

Product Name: Ataxin-7L1 Rabbit Polyclonal Antibody
Catalog #: APRab07254



Summary

Production Name	Ataxin-7L1 Rabbit Polyclonal Antibody
Description	Rabbit Polyclonal Antibody
Host	Rabbit
Application	IHC,ELISA
Reactivity	Human,Mouse

Performance

Conjugation	Unconjugated
Modification	Unmodified
Isotype	IgG
Clonality	Polyclonal
Form	Liquid
Storage	Store at 4°C short term. Aliquot and store at -20°C long term. Avoid freeze/thaw cycles.
Buffer	Liquid in PBS containing 50% glycerol, 0.5% BSA and 0.02% New type preservative N.
Purification	Affinity purification

Immunogen

Gene Name	ATXN7L1
Alternative Names	ATXN7L1; ATXN7L4; KIAA1218; Ataxin-7-like protein 1; Ataxin-7-like protein 4
Gene ID	222255.0
SwissProt ID	Q9ULK2.The antiserum was produced against synthesized peptide derived from human ATXN7L1. AA range:441-490

Application

Dilution Ratio	IHC 1:100-1:300 ELISA: 1:10000
Molecular Weight	

Background

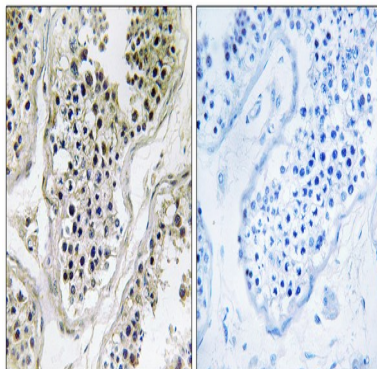
similarity:Contains 1 SCA7 domain.,similarity:Contains 1 SCA7 domain.,

Product Name: Ataxin-7L1 Rabbit Polyclonal Antibody
Catalog #: APRab07254



Research Area

Image Data



Immunohistochemistry analysis of paraffin-embedded human testis tissue, using ATXN7L1 Antibody. The picture on the right is blocked with the synthesized peptide.

Note

For research use only.