

**Product Name: Ataxin-2L Rabbit Polyclonal Antibody**  
**Catalog #: APRab07253**



## Summary

<b>Production Name</b>	Ataxin-2L Rabbit Polyclonal Antibody
<b>Description</b>	Rabbit Polyclonal Antibody
<b>Host</b>	Rabbit
<b>Application</b>	WB,ELISA
<b>Reactivity</b>	Human,Rat,Mouse

## Performance

<b>Conjugation</b>	Unconjugated
<b>Modification</b>	Unmodified
<b>Isotype</b>	IgG
<b>Clonality</b>	Polyclonal
<b>Form</b>	Liquid
<b>Storage</b>	Store at 4°C short term. Aliquot and store at -20°C long term. Avoid freeze/thaw cycles.
<b>Buffer</b>	Liquid in PBS containing 50% glycerol, 0.5% BSA and 0.02% New type preservative N.
<b>Purification</b>	Affinity purification

## Immunogen

<b>Gene Name</b>	ATXN2L
<b>Alternative Names</b>	ATXN2L; A2D; A2LG; A2LP; A2RP; Ataxin-2-like protein; Ataxin-2 domain protein; Ataxin-2-related protein
<b>Gene ID</b>	11273.0
<b>SwissProt ID</b>	Q8WWM7.The antiserum was produced against synthesized peptide derived from human ATXN2L. AA range:571-620

## Application

<b>Dilution Ratio</b>	WB 1:500 - 1:2000. ELISA: 1:20000. Not yet tested in other applications.
<b>Molecular Weight</b>	113kD

**Product Name: Ataxin-2L Rabbit Polyclonal Antibody**  
**Catalog #: APRab07253**

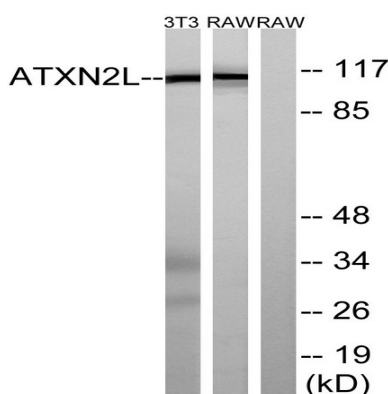


## Background

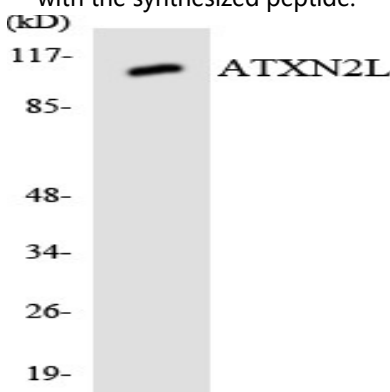
This gene encodes an ataxin type 2 related protein of unknown function. This protein is a member of the spinocerebellar ataxia (SCAs) family, which is associated with a complex group of neurodegenerative disorders. Several alternatively spliced transcripts encoding different isoforms have been found for this gene. [provided by RefSeq, Jul 2008],PTM:Arg-361 is dimethylated, probably to asymmetric dimethylarginine.,PTM:Thrombopoietin triggers the phosphorylation on tyrosine residues in a way that is dependent on MPL C-terminal domain.,sequence caution:Exon duplication.,similarity:Belongs to the ataxin-2 family.,subunit:Interacts with MPL/TPOR and EPOR and dissociates after ligand stimulation.,tissue specificity:Expressed at high levels in thymus, lymph node, spleen, fetal kidney and adult testis. Constitutively associated with MPL and EPOR in hematopoietic cells.,

## Research Area

## Image Data



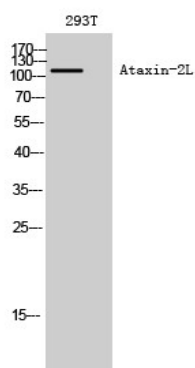
Western blot analysis of lysates from NIH/3T3 and RAW264.7 cells, using ATXN2L Antibody. The lane on the right is blocked with the synthesized peptide.



Western blot analysis of the lysates from 293 cells using ATXN2L antibody.

**Product Name: Ataxin-2L Rabbit Polyclonal Antibody**  
**Catalog #: APRab07253**

---



Western Blot analysis of 293T cells using Ataxin-2L Polyclonal Antibody diluted at 1: 2000

### **Note**

For research use only.