

Product Name: Asf1a Rabbit Polyclonal Antibody
Catalog #: APRab07212



Summary

Production Name	Asf1a Rabbit Polyclonal Antibody
Description	Rabbit Polyclonal Antibody
Host	Rabbit
Application	WB,ELISA
Reactivity	Human,Mouse

Performance

Conjugation	Unconjugated
Modification	Unmodified
Isotype	IgG
Clonality	Polyclonal
Form	Liquid
Storage	Store at 4°C short term. Aliquot and store at -20°C long term. Avoid freeze/thaw cycles.
Buffer	Liquid in PBS containing 50% glycerol, 0.5% BSA and 0.02% New type preservative N.
Purification	Affinity purification

Immunogen

Gene Name	ASF1A
Alternative Names	ASF1A; CGI-98; HSPC146; Histone chaperone ASF1A; Anti-silencing function protein 1 homolog A; hAsf1; hAsf1a; CCG1-interacting factor A; CIA; hCIA
Gene ID	25842.0
SwissProt ID	Q9Y294.The antiserum was produced against synthesized peptide derived from human ASF1A. AA range:121-170

Application

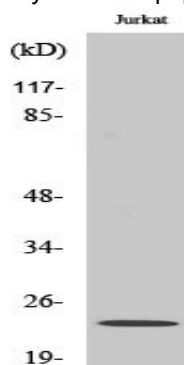
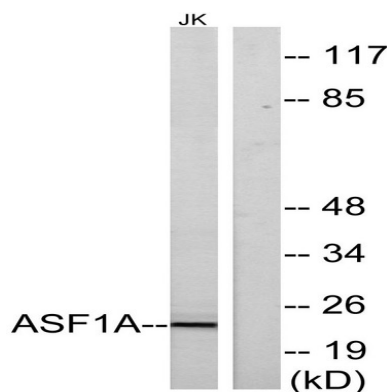
Dilution Ratio	WB 1:500 - 1:2000. ELISA: 1:20000
Molecular Weight	23kD

Background

This gene encodes a member of the H3/H4 family of histone chaperone proteins and is similar to the anti-silencing function-1 gene in yeast. The protein is a key component of a histone donor complex that functions in nucleosome assembly. It interacts with histones H3 and H4, and functions together with a chromatin assembly factor during DNA replication and repair. [provided by RefSeq, Jul 2008],function:Histone chaperone that facilitates histone deposition and histone exchange and removal during nucleosome assembly and disassembly. Cooperates with chromatin assembly factor 1 (CAF-1) to promote replication-dependent chromatin assembly and with HIRA to promote replication-independent chromatin assembly. Required for the formation of senescence-associated heterochromatin foci (SAHF) and efficient senescence-associated cell cycle exit.,PTM:Phosphorylated by TLK1 and TLK2. Highly phosphorylated in S-phase and at lower levels in M-phase.,similarity:Belongs to the ASF1 family.,subunit:Interacts with histone H3 (including both histone H3.1 and H3.3) and histone H4. Interacts with the CHAF1A, CHAF1B and RBBP4 subunits of the CAF-1 complex. Interacts with CABIN1, HAT1, HIRA, NASP, TAF1, TLK1, TLK2 and UBN1.,tissue specificity:Ubiquitously expressed.,

Research Area

Image Data



Product Name: Asf1a Rabbit Polyclonal Antibody
Catalog #: APRab07212



Western Blot analysis of various cells using Asf1a Polyclonal Antibody cells nucleus extracted by Minute TM Cytoplasmic and Nuclear Fractionation kit (SC-003, Invent biotech, MN, USA) .

Note

For research use only.