

**Product Name: Arylsulfatase K Rabbit Polyclonal Antibody**  
**Catalog #: APRab07188**

---

## Summary

<b>Production Name</b>	Arylsulfatase K Rabbit Polyclonal Antibody
<b>Description</b>	Rabbit Polyclonal Antibody
<b>Host</b>	Rabbit
<b>Application</b>	WB,IHC,ELISA
<b>Reactivity</b>	Human,Mouse,Rat

## Performance

<b>Conjugation</b>	Unconjugated
<b>Modification</b>	Unmodified
<b>Isotype</b>	IgG
<b>Clonality</b>	Polyclonal
<b>Form</b>	Liquid
<b>Storage</b>	Store at 4°C short term. Aliquot and store at -20°C long term. Avoid freeze/thaw cycles.
<b>Buffer</b>	Liquid in PBS containing 50% glycerol, 0.5% BSA and 0.02% New type preservative N.
<b>Purification</b>	Affinity purification

## Immunogen

<b>Gene Name</b>	ARSK
<b>Alternative Names</b>	ARSK; TSULF; Arylsulfatase K; ASK; Telethon sulfatase
<b>Gene ID</b>	153642.0
<b>SwissProt ID</b>	Q6UWY0.The antiserum was produced against synthesized peptide derived from human ARSK. AA range:481-530

## Application

<b>Dilution Ratio</b>	WB 1:500 - 1:2000. IHC 1:100 - 1:300. ELISA: 1:20000..
<b>Molecular Weight</b>	62kD

**Product Name: Arylsulfatase K Rabbit Polyclonal Antibody**  
**Catalog #: APRab07188**

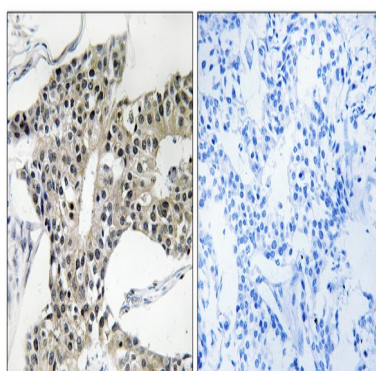
---

## Background

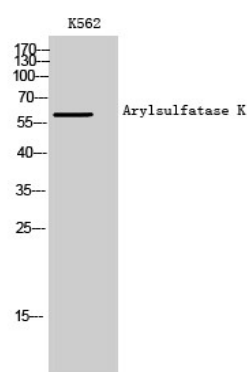
Sulfatases (EC 3.1.5.6), such as ARSK, hydrolyze sulfate esters from sulfated steroids, carbohydrates, proteoglycans, and glycolipids. They are involved in hormone biosynthesis, modulation of cell signaling, and degradation of macromolecules (Sardiello et al., 2005 [PubMed 16174644]).[supplied by OMIM, Mar 2008],cofactor: Binds 1 calcium ion per subunit.,PTM: The conversion to 3-oxoalanine (also known as C-formylglycine, FGly), of a serine or cysteine residue in prokaryotes and of a cysteine residue in eukaryotes, is critical for catalytic activity.,similarity: Belongs to the sulfatase family.,

## Research Area

## Image Data



Immunohistochemistry analysis of paraffin-embedded human breast carcinoma tissue, using ARSK Antibody. The picture on the right is blocked with the synthesized peptide.



Western Blot analysis of K562 cells using Arylsulfatase K Polyclonal Antibody

## Note

For research use only.