

Product Name: Arylsulfatase G Rabbit Polyclonal Antibody
Catalog #: APRab07186

Summary

Production Name	Arylsulfatase G Rabbit Polyclonal Antibody
Description	Rabbit Polyclonal Antibody
Host	Rabbit
Application	IHC,WB,
Reactivity	Human,Mouse,Rat

Performance

Conjugation	Unconjugated
Modification	Unmodified
Isotype	IgG
Clonality	Polyclonal
Form	Liquid
Storage	Store at 4°C short term. Aliquot and store at -20°C long term. Avoid freeze/thaw cycles.
Buffer	Liquid in PBS containing 50% glycerol, 0.5% BSA and 0.02% New type preservative N.
Purification	Affinity purification

Immunogen

Gene Name	ARSG
Alternative Names	ARSG; KIAA1001; Arylsulfatase G; ASG
Gene ID	22901.0
SwissProt ID	Q96EG1.The antiserum was produced against synthesized peptide derived from human ARSG. AA range:251-300

Application

Dilution Ratio	WB 1:500 - 1:2000. IHC 1:100 - 1:300. ELISA: 1:40000..
Molecular Weight	65kD

Product Name: Arylsulfatase G Rabbit Polyclonal Antibody
Catalog #: AP Rab07186

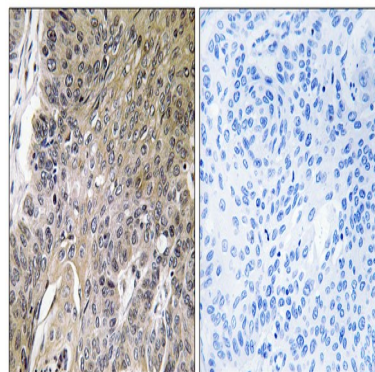
Background

The protein encoded by this gene belongs to the sulfatase enzyme family. Sulfatases hydrolyze sulfate esters from sulfated steroids, carbohydrates, proteoglycans, and glycolipids. They are involved in hormone biosynthesis, modulation of cell signaling, and degradation of macromolecules. This protein displays arylsulfatase activity at acidic pH, as is typical of lysosomal sulfatases, and has been shown to localize in the lysosomes. Alternatively spliced transcript variants have been found for this gene. [provided by RefSeq, Jun 2012], cofactor: Binds 1 calcium ion per subunit., PTM: N-glycosylated., PTM: The conversion to 3-oxoalanine (also known as C-formylglycine, FGly), of a serine or cysteine residue in prokaryotes and of a cysteine residue in eukaryotes, is critical for catalytic activity., similarity: Belongs to the sulfatase family., tissue specificity: Widely expressed.,

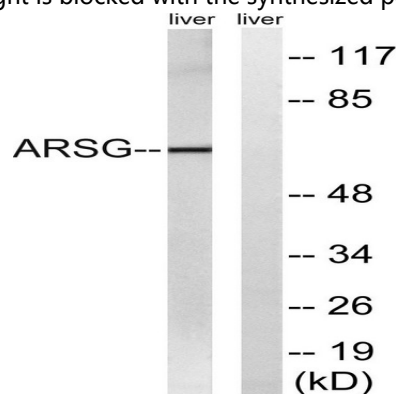
Research Area

Lysosome;

Image Data

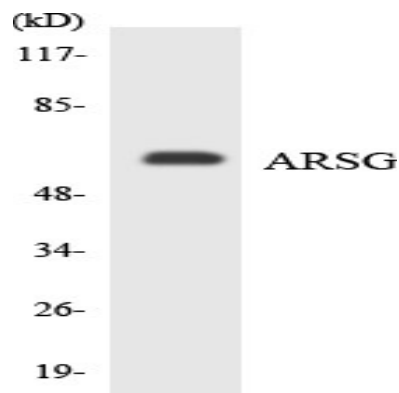


Immunohistochemistry analysis of paraffin-embedded human lung carcinoma tissue, using ARSG Antibody. The picture on the right is blocked with the synthesized peptide.

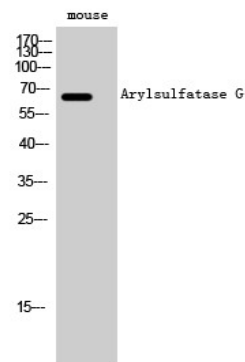


Western blot analysis of lysates from mouse liver, using ARSG Antibody. The lane on the right is blocked with the synthesized peptide.

Product Name: Arylsulfatase G Rabbit Polyclonal Antibody
Catalog #: APRab07186



Western blot analysis of the lysates from HeLa cells using ARSG antibody.



Western Blot analysis of mouse cells using Arylsulfatase G Polyclonal Antibody

Note

For research use only.