

**Product Name: Arylsulfatase D Rabbit Polyclonal Antibody**  
**Catalog #: APRab07183**

---

## Summary

<b>Production Name</b>	Arylsulfatase D Rabbit Polyclonal Antibody
<b>Description</b>	Rabbit Polyclonal Antibody
<b>Host</b>	Rabbit
<b>Application</b>	IHC,IF,ELISA
<b>Reactivity</b>	Human,Rat,Mouse

## Performance

<b>Conjugation</b>	Unconjugated
<b>Modification</b>	Unmodified
<b>Isotype</b>	IgG
<b>Clonality</b>	Polyclonal
<b>Form</b>	Liquid
<b>Storage</b>	Store at 4°C short term. Aliquot and store at -20°C long term. Avoid freeze/thaw cycles.
<b>Buffer</b>	Liquid in PBS containing 50% glycerol, 0.5% BSA and 0.02% New type preservative N.
<b>Purification</b>	Affinity purification

## Immunogen

<b>Gene Name</b>	ARSD
<b>Alternative Names</b>	ARSD; Arylsulfatase D; ASD
<b>Gene ID</b>	414.0
<b>SwissProt ID</b>	P51689.The antiserum was produced against synthesized peptide derived from human ARSD. AA range:331-380

## Application

<b>Dilution Ratio</b>	IHC 1:100 - 1:300. IF 1:200 - 1:1000. ELISA: 1:20000. Not yet tested in other applications.
<b>Molecular Weight</b>	70kD

**Product Name: Arylsulfatase D Rabbit Polyclonal Antibody**  
**Catalog #: APRab07183**

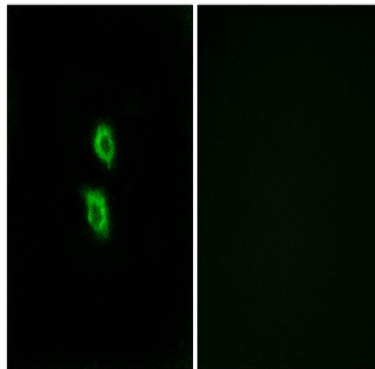
---

## Background

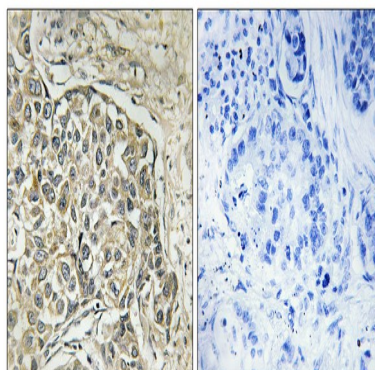
The protein encoded by this gene is a member of the sulfatase family. Sulfatases are essential for the correct composition of bone and cartilage matrix. The encoded protein is postranslationally glycosylated and localized to the lysosome. This gene is located within a cluster of similar arylsulfatase genes on chromosome X. A related pseudogene has been identified in the pseudoautosomal region of chromosome Y. [provided by RefSeq, Jul 2011],cofactor: Binds 1 calcium ion per subunit.,PTM: The conversion to 3-oxoalanine (also known as C-formylglycine, FGly), of a serine or cysteine residue in prokaryotes and of a cysteine residue in eukaryotes, is critical for catalytic activity.,similarity: Belongs to the sulfatase family.,tissue specificity: Expressed in the pancreas, kidney, liver, lung, placenta, brain and heart.,

## Research Area

## Image Data



Immunofluorescence analysis of MCF7 cells, using ARSD Antibody. The picture on the right is blocked with the synthesized peptide.



Immunohistochemistry analysis of paraffin-embedded human lung carcinoma tissue, using ARSD Antibody. The picture on the right is blocked with the synthesized peptide.

**Product Name: Arylsulfatase D Rabbit Polyclonal  
Antibody**  
**Catalog #: APRab07183**

---



**Note**

For research use only.