

Product Name: ARRDC2 Rabbit Polyclonal Antibody
Catalog #: AP Rab07166



Summary

Production Name	ARRDC2 Rabbit Polyclonal Antibody
Description	Rabbit Polyclonal Antibody
Host	Rabbit
Application	IHC, WB, ELISA
Reactivity	Human, Mouse

Performance

Conjugation	Unconjugated
Modification	Unmodified
Isotype	IgG
Clonality	Polyclonal
Form	Liquid
Storage	Store at 4°C short term. Aliquot and store at -20°C long term. Avoid freeze/thaw cycles.
Buffer	Liquid in PBS containing 50% glycerol, 0.5% BSA and 0.02% New type preservative N.
Purification	Affinity purification

Immunogen

Gene Name	ARRDC2
Alternative Names	ARRDC2; PP2703; Arrestin domain-containing protein 2
Gene ID	27106.0
SwissProt ID	Q8TBH0. The antiserum was produced against synthesized peptide derived from human ARRDC2. AA range: 141-190

Application

Dilution Ratio	WB 1:500 - 1:2000. IHC 1:100 - 1:300. ELISA: 1:40000..
Molecular Weight	44kD

Background

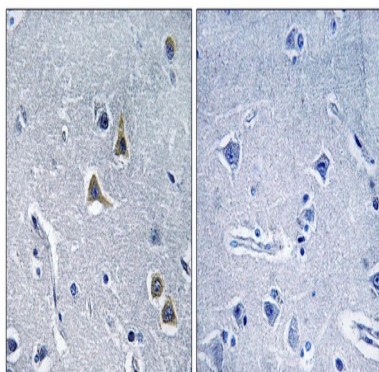
Product Name: ARRDC2 Rabbit Polyclonal Antibody
Catalog #: AP Rab07166



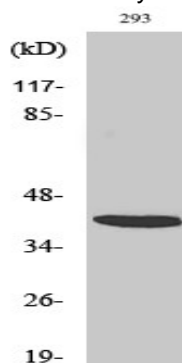
similarity:Belongs to the arrestin family.,similarity:Belongs to the arrestin family.,

Research Area

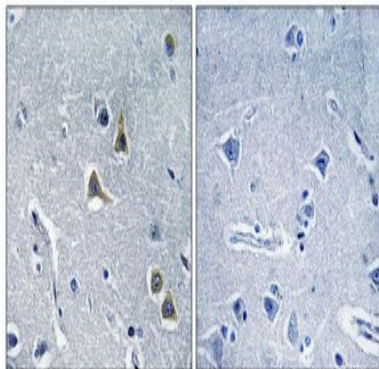
Image Data



Immunohistochemistry analysis of paraffin-embedded human brain tissue, using ARRDC2 Antibody. The picture on the right is blocked with the synthesized peptide.



Western Blot analysis of various cells using ARRDC2 Polyclonal Antibody



Immunohistochemical analysis of paraffin-embedded Human brain. Antibody was diluted at 1:100 (4°,overnight) . High-pressure and temperature Tris-EDTA,pH8.0 was used for antigen retrieval. Negative contrl (right) obtained from antibody

Product Name: ARRDC2 Rabbit Polyclonal Antibody
Catalog #: APRab07166



was pre-absorbed by immunogen peptide.

Note

For research use only.