

## Summary

<b>Production Name</b>	ApoF Rabbit Polyclonal Antibody
<b>Description</b>	Rabbit Polyclonal Antibody
<b>Host</b>	Rabbit
<b>Application</b>	WB,
<b>Reactivity</b>	Human,Rat,Mouse

## Performance

<b>Conjugation</b>	Unconjugated
<b>Modification</b>	Unmodified
<b>Isotype</b>	IgG
<b>Clonality</b>	Polyclonal
<b>Form</b>	Liquid
<b>Storage</b>	Store at 4°C short term. Aliquot and store at -20°C long term. Avoid freeze/thaw cycles.
<b>Buffer</b>	Liquid in PBS containing 50% glycerol, 0.5% BSA and 0.02% New type preservative N.
<b>Purification</b>	Affinity purification

## Immunogen

<b>Gene Name</b>	APOF
<b>Alternative Names</b>	APOF; Apolipoprotein F; Apo-F; Lipid transfer inhibitor protein; LTIP
<b>Gene ID</b>	319.0
<b>SwissProt ID</b>	Q13790.The antiserum was produced against synthesized peptide derived from human APOF. AA range:221-270

## Application

<b>Dilution Ratio</b>	WB 1:500 - 1:2000. ELISA: 1:40000. Not yet tested in other applications.
<b>Molecular Weight</b>	38kD

## Background

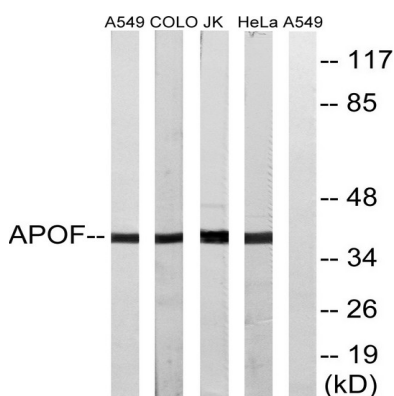
**Product Name: ApoF Rabbit Polyclonal Antibody**  
**Catalog #: APRab07040**



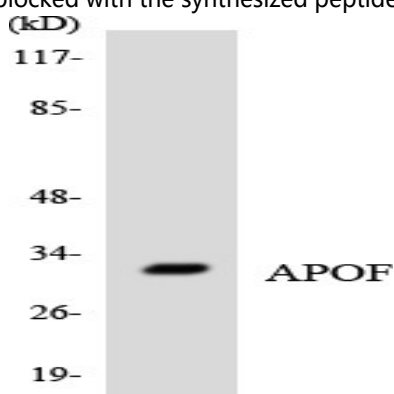
The product of this gene is one of the minor apolipoproteins found in plasma. This protein forms complexes with lipoproteins and may be involved in transport and/or esterification of cholesterol. [provided by RefSeq, Jul 2008],function:Minor apolipoprotein that associates with LDL. Inhibits cholesteryl ester transfer protein (CETP) activity and appears to be an important regulator of cholesterol transport. Also associates to a lesser degree with VLDL, Apo-AI and Apo-AII,tissue specificity:Liver. Secreted in plasma.,

## Research Area

## Image Data

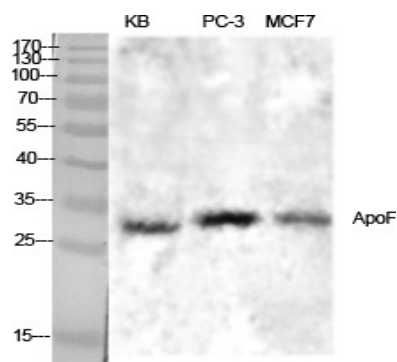


Western blot analysis of lysates from HeLa, Jurkat, COLO, and A549 cells, using APOF Antibody. The lane on the right is blocked with the synthesized peptide.

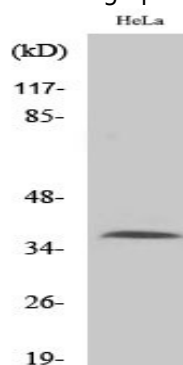


Western blot analysis of the lysates from COLO205 cells using APOF antibody.

**Product Name: ApoF Rabbit Polyclonal Antibody**  
**Catalog #: APRab07040**



Western Blot analysis of various cells using ApoF Polyclonal Antibody diluted at 1: 1000



Western Blot analysis of A549 cells using ApoF Polyclonal Antibody diluted at 1: 1000

## **Note**

For research use only.