

## Summary

<b>Production Name</b>	APOBEC3D/F Rabbit Polyclonal Antibody
<b>Description</b>	Rabbit Polyclonal Antibody
<b>Host</b>	Rabbit
<b>Application</b>	IHC, WB, ELISA
<b>Reactivity</b>	Human, Monkey

## Performance

<b>Conjugation</b>	Unconjugated
<b>Modification</b>	Unmodified
<b>Isotype</b>	IgG
<b>Clonality</b>	Polyclonal
<b>Form</b>	Liquid
<b>Storage</b>	Store at 4°C short term. Aliquot and store at -20°C long term. Avoid freeze/thaw cycles.
<b>Buffer</b>	Liquid in PBS containing 50% glycerol, 0.5% BSA and 0.02% New type preservative N.
<b>Purification</b>	Affinity purification

## Immunogen

<b>Gene Name</b>	APOBEC3D/APOBEC3F APOBEC3D; Probable DNA dC->dU-editing enzyme APOBEC-3D; APOBEC3F; DNA dC->dU-editing enzyme APOBEC-3F; Apolipoprotein B mRNA-editing enzyme catalytic polypeptide-like 3F
<b>Alternative Names</b>	
<b>Gene ID</b>	200316/140564
<b>SwissProt ID</b>	Q96AK3/Q8IUX4. The antiserum was produced against synthesized peptide derived from human APOBEC3D/F. AA range:232-281

## Application

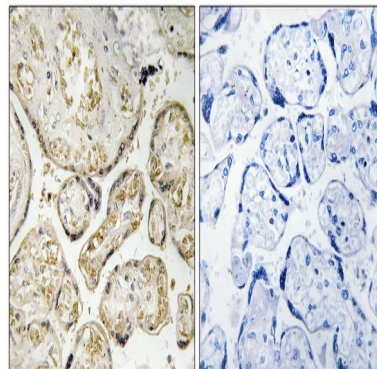
<b>Dilution Ratio</b>	WB 1:500 - 1:2000. IHC 1:100 - 1:300. ELISA: 1:40000..
<b>Molecular Weight</b>	40kD

## Background

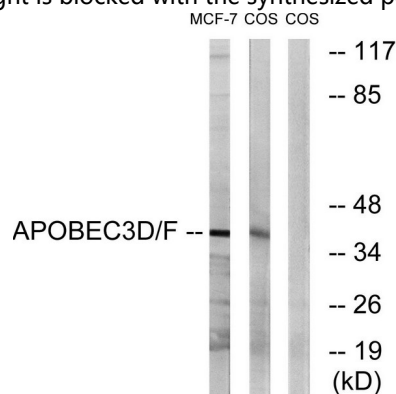
This gene is a member of the cytidine deaminase gene family. It is one of a group of related genes found in a cluster, thought to result from gene duplication, on chromosome 22. Members of the cluster encode proteins that are structurally and functionally related to the C to U RNA-editing cytidine deaminase APOBEC1 and inhibit retroviruses, such as HIV, by deaminating cytosine residues in nascent retroviral cDNA. [provided by RefSeq, Jul 2008],cofactor:Zinc.,function:Unknown. Unable to reduce HIV-1 infectivity in vitro.,miscellaneous:It is one of seven related genes or pseudogenes found in a cluster, thought to result from gene duplication, on chromosome 22.,similarity:Belongs to the cytidine and deoxycytidylate deaminase family.,

## Research Area

## Image Data

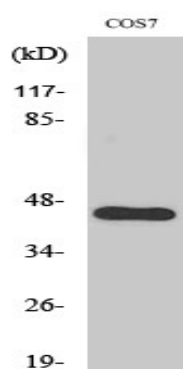


Immunohistochemistry analysis of paraffin-embedded human placenta tissue, using APOBEC3D/F Antibody. The picture on the right is blocked with the synthesized peptide.



Western blot analysis of lysates from COS7 and MCF-7 cells, using APOBEC3D/F Antibody. The lane on the right is blocked with the synthesized peptide.

Product Name: APOBEC3D/F Rabbit Polyclonal Antibody  
Catalog #: APRab07025



Western Blot analysis of various cells using APOBEC3D/F Polyclonal Antibody

**Note**

For research use only.