

Summary

Production Name	APLF Rabbit Polyclonal Antibody
Description	Rabbit Polyclonal Antibody
Host	Rabbit
Application	IHC, WB, ELISA
Reactivity	Human, Mouse

Performance

Conjugation	Unconjugated
Modification	Unmodified
Isotype	IgG
Clonality	Polyclonal
Form	Liquid
Storage	Store at 4°C short term. Aliquot and store at -20°C long term. Avoid freeze/thaw cycles.
Buffer	Liquid in PBS containing 50% glycerol, 0.5% BSA and 0.02% New type preservative N.
Purification	Affinity purification

Immunogen

Gene Name	APLF
Alternative Names	APLF; C2orf13; PALF; XIP1; Aprataxin and PNK-like factor; Apurinic-apyrimidinic endonuclease APLF; PNK and APTX-like FHA domain-containing protein; XRCC1-interacting protein 1
Gene ID	200558.0
SwissProt ID	Q8IW19. The antiserum was produced against synthesized peptide derived from human APLF. AA range: 82-131

Application

Dilution Ratio	WB 1:500 - 1:2000. IHC 1:100 - 1:300. ELISA: 1:40000..
Molecular Weight	57kD

Product Name: APLF Rabbit Polyclonal Antibody
Catalog #: APRab07011

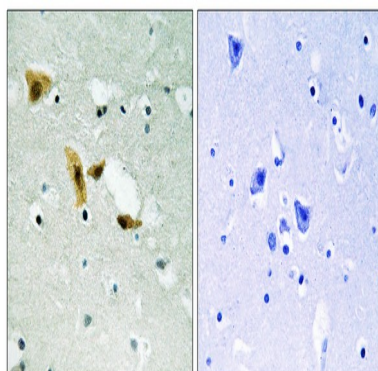


Background

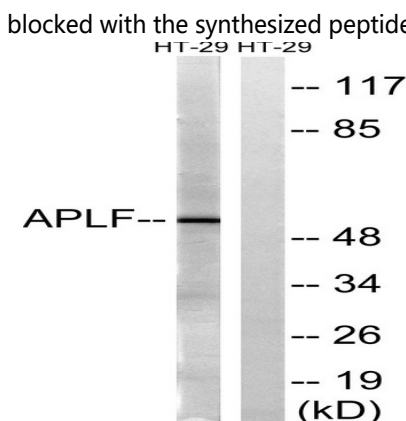
C2ORF13 is a component of the cellular response to chromosomal DNA single- and double-strand breaks (Iles et al., 2007 [PubMed 17353262]). [supplied by OMIM, Mar 2008], domain: The FHA-like domain mediates interaction with XRCC1 and XRCC4., function: Involved in single-strand and double-strand DNA break repair., PTM: Phosphorylated in an ATM-dependent manner upon double-strand DNA break., similarity: Contains 1 FHA-like domain., similarity: Contains 2 C2H2-type zinc fingers., subcellular location: Colocalizes with XRCC1 at sites of DNA damage., subunit: Interacts with XRCC1. May also interact with XRCC4 and XRCC5.,

Research Area

Image Data

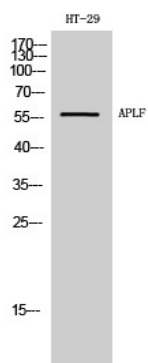


Immunohistochemistry analysis of paraffin-embedded human brain tissue, using APLF Antibody. The picture on the right is blocked with the synthesized peptide.



Western blot analysis of lysates from HT-29 cells, using APLF Antibody. The lane on the right is blocked with the synthesized peptide.

Product Name: APLF Rabbit Polyclonal Antibody
Catalog #: APRab07011



Western Blot analysis of HT-29 cells using APLF Polyclonal Antibody

Note

For research use only.