

**Product Name: Angptl1/2 Rabbit Polyclonal Antibody**  
**Catalog #: APRab06898**



## Summary

<b>Production Name</b>	Angptl1/2 Rabbit Polyclonal Antibody
<b>Description</b>	Rabbit Polyclonal Antibody
<b>Host</b>	Rabbit
<b>Application</b>	WB,ELISA
<b>Reactivity</b>	Human,Mouse,Rat

## Performance

<b>Conjugation</b>	Unconjugated
<b>Modification</b>	Unmodified
<b>Isotype</b>	IgG
<b>Clonality</b>	Polyclonal
<b>Form</b>	Liquid
<b>Storage</b>	Store at 4°C short term. Aliquot and store at -20°C long term. Avoid freeze/thaw cycles.
<b>Buffer</b>	Liquid in PBS containing 50% glycerol, 0.5% BSA and 0.02% New type preservative N.
<b>Purification</b>	Affinity purification

## Immunogen

<b>Gene Name</b>	ANGPTL1/ANGPTL2 ANGPTL1; ANG3; ANGPT3; ARP1; PSEC0154; Angiopoietin-related protein 1;
<b>Alternative Names</b>	Angiopoietin-3; ANG-3; Angiopoietin-like protein 1; ANGPTL2; ARP2; Angiopoietin-related protein 2; Angiopoietin-like protein 2
<b>Gene ID</b>	9068.0
<b>SwissProt ID</b>	O95841.The antiserum was produced against synthesized peptide derived from the Internal region of human ANGPTL1/2. AA range:91-140

## Application

<b>Dilution Ratio</b>	WB 1:500 - 1:2000. ELISA: 1:20000
<b>Molecular Weight</b>	60kD

**Product Name: Angptl1/2 Rabbit Polyclonal Antibody**  
**Catalog #: APRab06898**

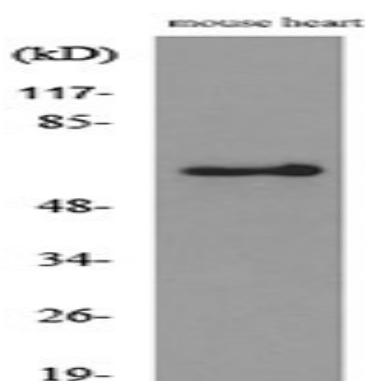


## Background

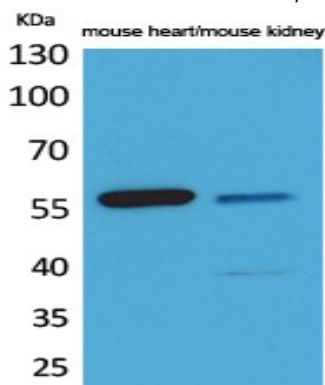
Angiopoietins are members of the vascular endothelial growth factor family and the only known growth factors largely specific for vascular endothelium. Angiopoietin-1, angiopoietin-2, and angiopoietin-4 participate in the formation of blood vessels. The protein encoded by this gene is another member of the angiopoietin family that is widely expressed in adult tissues with mRNA levels highest in highly vascularized tissues. This protein was found to be a secretory protein that does not act as an endothelial cell mitogen in vitro. [provided by RefSeq, Jul 2008],similarity:Contains 1 fibrinogen C-terminal domain.,tissue specificity:Highly expressed in adrenal gland, placenta, thyroid gland, heart, skeletal muscle and small intestine. Weakly expressed in testis, ovary, colon, pancreas, kidney and stomach.,

## Research Area

## Image Data



Western blot analysis of lysate from mouse heart cells, using ANGPTL1/2 Antibody.



Western Blot analysis of mouse heart, mouse kidney cells using Angptl1/2 Polyclonal Antibody.. Secondary antibody was diluted at 1:20000

**Product Name: Angptl1/2 Rabbit Polyclonal Antibody**  
**Catalog #: APRab06898**

---



**Note**

For research use only.