

Product Name: Amylin Rabbit Polyclonal Antibody
Catalog #: APRab06865



Summary

Production Name	Amylin Rabbit Polyclonal Antibody
Description	Rabbit Polyclonal Antibody
Host	Rabbit
Application	IHC, WB, ELISA
Reactivity	Human, Rat, Mouse

Performance

Conjugation	Unconjugated
Modification	Unmodified
Isotype	IgG
Clonality	Polyclonal
Form	Liquid
Storage	Store at 4°C short term. Aliquot and store at -20°C long term. Avoid freeze/thaw cycles.
Buffer	Liquid in PBS containing 50% glycerol, 0.5% BSA and 0.02% New type preservative N.
Purification	Affinity purification

Immunogen

Gene Name	IAPP
Alternative Names	IAPP; Islet amyloid polypeptide; Amylin; Diabetes-associated peptide; DAP; Insulinoma amyloid peptide
Gene ID	3375.0
SwissProt ID	P10997. The antiserum was produced against synthesized peptide derived from human Amylin. AA range: 1-50

Application

Dilution Ratio	WB 1:500 - 1:2000. IHC 1:100 - 1:300. . ELISA: 1:10000. Not yet tested in other applications.
Molecular Weight	25kD

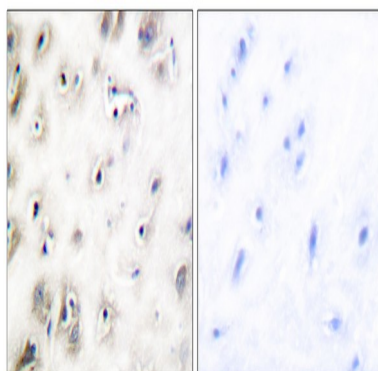
Background

islet amyloid polypeptide(IAPP) Homo sapiens This gene encodes a member of the calcitonin family of peptide hormones. This hormone is released from pancreatic beta cells following food intake to regulate blood glucose levels and act as a satiation signal. Human patients with type 1 and advanced type 2 diabetes exhibit reduced levels of the encoded hormone in blood and pancreas. This protein also exhibits a bactericidal, antimicrobial activity. [provided by RefSeq, Jul 2016],disease:IAPP is the peptide subunit of amyloid found in pancreatic islets of type 2 diabetic patients and in insulinomas.,function:Selectively inhibits insulin-stimulated glucose utilization and glycogen deposition in muscle, while not affecting adipocyte glucose metabolism.,online information:Amylin entry,similarity:Belongs to the calcitonin family.,

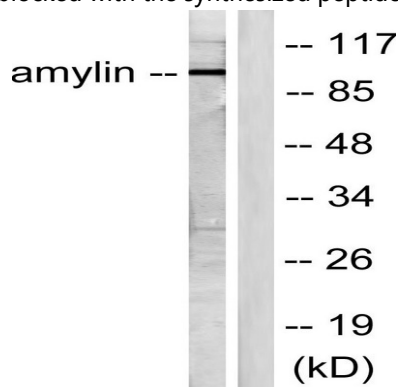
Research Area

Maturity onset diabetes of the young;

Image Data



Immunohistochemistry analysis of paraffin-embedded human brain tissue, using Amylin Antibody. The picture on the right is blocked with the synthesized peptide.



Western blot analysis of lysates from HeLa cells, treated with EGF 200ng/ml 30', using Amylin Antibody. The lane on the right is blocked with the synthesized peptide.

Product Name: Amylin Rabbit Polyclonal Antibody
Catalog #: APRab06865



Western Blot analysis of various cells using Amylin Polyclonal Antibody diluted at 1: 1000

Note

For research use only.