

Product Name: AMY-1 Rabbit Polyclonal Antibody
Catalog #: APRab06862



Summary

Production Name	AMY-1 Rabbit Polyclonal Antibody
Description	Rabbit Polyclonal Antibody
Host	Rabbit
Application	IHC,ELISA
Reactivity	Human,Mouse

Performance

Conjugation	Unconjugated
Modification	Unmodified
Isotype	IgG
Clonality	Polyclonal
Form	Liquid
Storage	Store at 4°C short term. Aliquot and store at -20°C long term. Avoid freeze/thaw cycles.
Buffer	Liquid in PBS containing 50% glycerol, 0.5% BSA and 0.02% New type preservative N.
Purification	Affinity purification

Immunogen

Gene Name	MYCBP
Alternative Names	MYCBP; AMY1; C-Myc-binding protein; Associate of Myc 1; AMY-1
Gene ID	26292.0
SwissProt ID	Q99417.Synthesized peptide derived from AMY-1 . at AA range: 30-110

Application

Dilution Ratio	IHC 1:100-1:300 ELISA: 1:10000
Molecular Weight	

Background

The protein encoded by this gene binds to the N-terminus of the oncogenic protein C-MYC, enhancing the ability of C-MYC to activate E box-dependent transcription. The encoded protein is normally found in the cytoplasm, but it translocates

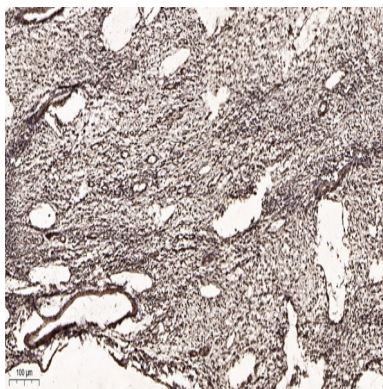
Product Name: AMY-1 Rabbit Polyclonal Antibody
Catalog #: APRab06862



to the nucleus during S phase of the cell cycle and associates with C-MYC. This protein may be involved in spermatogenesis. This gene can be silenced by microRNA-22. Two transcript variants, one protein-coding and the other probably not protein-coding, have been found for this gene. [provided by RefSeq, Nov 2011],function:May control the transcriptional activity of MYC. Stimulates the activation of E box-dependent transcription by MYC.,similarity:Belongs to the AMY1 family.,subcellular location:Translocates into the nucleus in the S phase of the cell cycle upon an increase of c-Myc expression. Found in the mitochondria when associated with AKAP1.,subunit:Binds via its C-terminal region to the N-terminal region of MYC. Associates with AKAP1/S-AKAP84. Interacts with MYCBPAP.,tissue specificity:Highly expressed in heart, placenta, pancreas, skeletal muscle and kidney. Also present at low levels in lung.,

Research Area

Image Data



Immunohistochemical analysis of paraffin-embedded human oophoroma. 1, Antibody was diluted at 1:200 (4° overnight) .
2, Tris-EDTA,pH9.0 was used for antigen retrieval. 3,Secondary antibody was diluted at 1:200 (room temperature, 45min) .

Note

For research use only.