

Product Name: Amphiphsin I Rabbit Polyclonal Antibody
Catalog #: APRab06837

Summary

Production Name	Amphiphsin I Rabbit Polyclonal Antibody
Description	Rabbit Polyclonal Antibody
Host	Rabbit
Application	WB,ELISA
Reactivity	Human,Mouse,Rat

Performance

Conjugation	Unconjugated
Modification	Unmodified
Isotype	IgG
Clonality	Polyclonal
Form	Liquid
Storage	Store at 4°C short term. Aliquot and store at -20°C long term. Avoid freeze/thaw cycles.
Buffer	Liquid in PBS containing 50% glycerol, 0.5% BSA and 0.02% New type preservative N.
Purification	Affinity purification

Immunogen

Gene Name	AMPH
Alternative Names	AMPH; AMPH1; Amphiphsin
Gene ID	273.0
SwissProt ID	P49418.The antiserum was produced against synthesized peptide derived from human AMPH. AA range:131-180

Application

Dilution Ratio	WB 1:500 - 1:2000. ELISA: 1:20000. Not yet tested in other applications.
Molecular Weight	76kD

Product Name: Amphiphysin I Rabbit Polyclonal Antibody
Catalog #: AP Rab06837



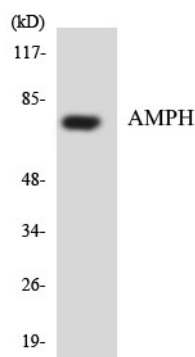
Background

This gene encodes a protein associated with the cytoplasmic surface of synaptic vesicles. A subset of patients with stiff-man syndrome who were also affected by breast cancer are positive for autoantibodies against this protein. Alternate splicing of this gene results in two transcript variants encoding different isoforms. Additional splice variants have been described, but their full length sequences have not been determined. A pseudogene of this gene is found on chromosome 11.[provided by RefSeq, Nov 2010],disease:Antibodies against AMPH are detected in patients with stiff-man syndrome, a rare disease of the central nervous system characterized by progressive rigidity of the body musculature with superimposed painful spasms.,function:May participate in mechanisms of regulated exocytosis in synapses and certain endocrine cell types. May control the properties of the membrane associated cytoskeleton.,similarity:Contains 1 BAR domain.,similarity:Contains 1 SH3 domain.,subunit:Heterodimer with BIN1. Binds SH3GLB1 and AP2A2.,tissue specificity:Neurons, certain endocrine cell types and spermatocytes.,

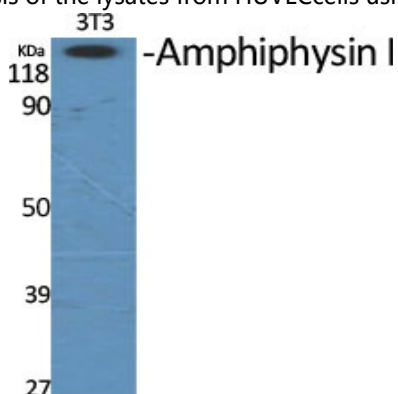
Research Area

Fc gamma R-mediated phagocytosis;

Image Data

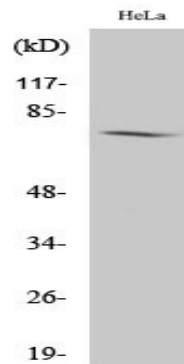


Western blot analysis of the lysates from HUVEC cells using AMPH antibody.



Western Blot analysis of various cells using Amphiphysin I Polyclonal Antibody

Product Name: Amphiphysin I Rabbit Polyclonal Antibody
Catalog #: APRab06837



Western Blot analysis of HeLa cells using Amphiphysin I Polyclonal Antibody

Note

For research use only.