

**Product Name: ALY Rabbit Polyclonal Antibody**  
**Catalog #: APRab06818**



## Summary

<b>Production Name</b>	ALY Rabbit Polyclonal Antibody
<b>Description</b>	Rabbit Polyclonal Antibody
<b>Host</b>	Rabbit
<b>Application</b>	WB,ELISA
<b>Reactivity</b>	Human,Mouse,Rat

## Performance

<b>Conjugation</b>	Unconjugated
<b>Modification</b>	Unmodified
<b>Isotype</b>	IgG
<b>Clonality</b>	Polyclonal
<b>Form</b>	Liquid
<b>Storage</b>	Store at 4°C short term. Aliquot and store at -20°C long term. Avoid freeze/thaw cycles.
<b>Buffer</b>	Liquid in PBS containing 50% glycerol, 0.5% BSA and 0.02% New type preservative N.
<b>Purification</b>	Affinity purification

## Immunogen

<b>Gene Name</b>	ALYREF
<b>Alternative Names</b>	ALYREF; ALY; BEF; THOC4; THO complex subunit 4; Tho4; Ally of AML-1 and LEF-1; Aly/REF export factor; Transcriptional coactivator Aly/REF; bZIP-enhancing factor BEF
<b>Gene ID</b>	10189.0
<b>SwissProt ID</b>	Q86V81.The antiserum was produced against synthesized peptide derived from human THOC4. AA range:121-170

## Application

<b>Dilution Ratio</b>	WB 1:500 - 1:2000. ELISA: 1:10000. Not yet tested in other applications.
<b>Molecular Weight</b>	27kD

## Background

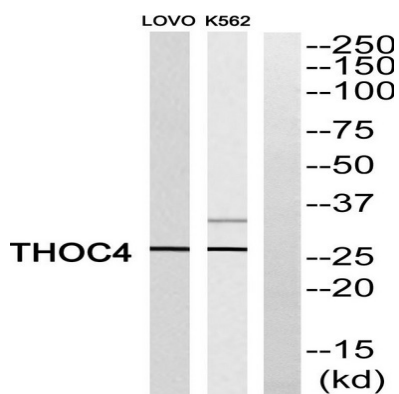
The protein encoded by this gene is a heat stable, nuclear protein and functions as a molecular chaperone. It is thought to regulate dimerization, DNA binding, and transcriptional activity of basic region-leucine zipper (bZIP) proteins. [provided by RefSeq, Jul 2008],disease:Antibodies against THOC4 are found in sera of patients with systemic lupus erythematosus (SLE),function:Acts as chaperone and promotes the dimerization of transcription factors containing basic leucine zipper (bZIP) domains and thereby promotes transcriptional activation. Plays a role in mRNA processing and export. May function as scaffold that mediates interactions between proteins and/or RNA. Integral part of the THO/TREX complex that is recruited to transcribed genes and travels with the RNA polymerase during elongation. Is part of the exon junction complex that remains associated with spliced mRNA and plays an important role in mRNA export and nonsense-mediated RNA decay. Directs mRNA derived from Herpes simplex virus intron-less genes to the NXF1-mediated export pathway.,PTM:Arg-50 and Arg-204 are dimethylated, probably to asymmetric dimethylarginine.,PTM:Phosphorylated upon DNA damage, probably by ATM or ATR.,similarity:Contains 1 RRM (RNA recognition motif) domain.,subcellular location:Travels to the cytoplasm as part of the exon junction complex (EJC) bound to mRNA.,subunit:Homomultimer. Binds LEF1 and RUNX1 (By similarity). Is part of several complexes involved in mRNA processing and export. Part of the heteromultimeric THO/TREX complex containing THOC1, THOC2, THOC3, THOC4 and UAP56. Associates with the spliceosome. Binds NXF1 and RBM8A directly and is part of the exon junction complex (EJC) containing NCBP1, NCBP2, RBM8A, SRRM1, NXF1, RENT2, RENT3B and THOC4 (By similarity). Found in a mRNA splicing-dependent exon junction complex (EJC) with DEK, RBM8A, RNPS1, SRRM1 and THOC4. Binds UL54 from Herpes simplex type 1 (strain KOS). Found in a mRNP complex with RENT3A and RENT3B. Interacts with BAT1, RBM8A, RNPS1 and SRRM1. Identified in the spliceosome C complex, at least composed of AQR, ASCC3L1, C19orf29, CDC40, CDC5L, CRNKL1, DDX23, DDX41, DDX48, DDX5, DGCR14, DHX35, DHX38, DHX8, EFTUD2, FRG1, GPATC1, HNRPA1, HNRPA2B1, HNRPA3, HNRPC, HNRPF, HNRPH1, HNRPK, HNRPM, HNRPR, HNRPU, KIAA1160, KIAA1604, LSM2, LSM3, MAGOH, MORG1, PABPC1, PLRG1, PNN, PPIE, PPIL1, PPIL3, PPWD1, PRPF19, PRPF4B, PRPF6, PRPF8, RALY, RBM22, RBM8A, RBMX, SART1, SF3A1, SF3A2, SF3A3, SF3B1, SF3B2, SF3B3, SFRS1, SKIV2L2, SNRPA1, SNRPB, SNRPB2, SNRPD1, SNRPD2, SNRPD3, SNRPE, SNRPF, SNRPG, SNW1, SRRM1, SRRM2, SYF2, SYNCRIP, TFIP11, THOC4, U2AF1, WDR57, XAB2 and ZCCHC8.,

## Research Area

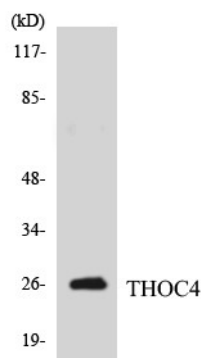
Spliceosome;

## Image Data

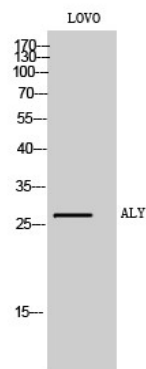
**Product Name: ALY Rabbit Polyclonal Antibody**  
**Catalog #: APRab06818**



Western blot analysis of THOC4 Antibody. The lane on the right is blocked with the THOC4 peptide.



Western blot analysis of the lysates from HepG2 cells using THOC4 antibody.



Western Blot analysis of LOVO cells using ALY Polyclonal Antibody

## Note

For research use only.