

**Product Name: ALS2CR11 Rabbit Polyclonal Antibody**  
**Catalog #: APRab06811**



## Summary

<b>Production Name</b>	ALS2CR11 Rabbit Polyclonal Antibody
<b>Description</b>	Rabbit Polyclonal Antibody
<b>Host</b>	Rabbit
<b>Application</b>	WB,ELISA
<b>Reactivity</b>	Human,Rat,Mouse

## Performance

<b>Conjugation</b>	Unconjugated
<b>Modification</b>	Unmodified
<b>Isotype</b>	IgG
<b>Clonality</b>	Polyclonal
<b>Form</b>	Liquid
<b>Storage</b>	Store at 4°C short term. Aliquot and store at -20°C long term. Avoid freeze/thaw cycles.
<b>Buffer</b>	Liquid in PBS containing 50% glycerol, 0.5% BSA and 0.02% New type preservative N.
<b>Purification</b>	Affinity purification

## Immunogen

<b>Gene Name</b>	ALS2CR11
<b>Alternative Names</b>	ALS2CR11; Amyotrophic lateral sclerosis 2 chromosomal region candidate gene 11 protein
<b>Gene ID</b>	151254.0
<b>SwissProt ID</b>	Q53TS8.The antiserum was produced against synthesized peptide derived from human ALS2CR11. AA range:491-540

## Application

<b>Dilution Ratio</b>	WB 1:500 - 1:2000. ELISA: 1:40000. Not yet tested in other applications.
<b>Molecular Weight</b>	72kD

**Product Name: ALS2CR11 Rabbit Polyclonal Antibody**  
**Catalog #: AP Rab06811**

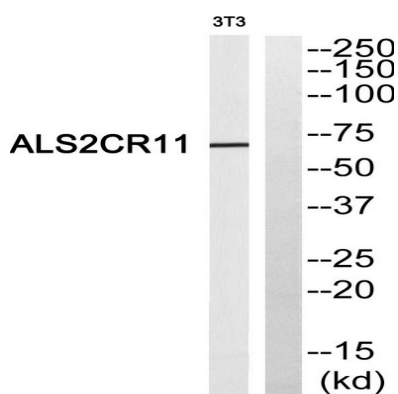


## Background

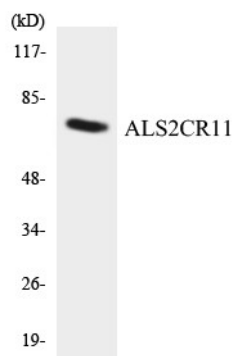
An autosomal recessive form of juvenile amyotrophic lateral sclerosis was originally mapped to a region of chromosome 2 that includes this gene. The encoded protein contains a calcium-dependent membrane targeting C2 domain. This domain is often found in proteins that are involved in membrane trafficking and signal transduction. [provided by RefSeq, Jun 2016],

## Research Area

## Image Data



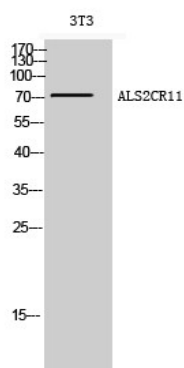
Western blot analysis of ALS2CR11 Antibody. The lane on the right is blocked with the ALS2CR11 peptide.



Western blot analysis of the lysates from COLO205 cells using ALS2CR11 antibody.

**Product Name: ALS2CR11 Rabbit Polyclonal Antibody**  
**Catalog #: APRab06811**

---



Western Blot analysis of 3T3 cells using ALS2CR11 Polyclonal Antibody

**Note**

For research use only.