

**Product Name: ADCK5 Rabbit Polyclonal Antibody**  
**Catalog #: APRab06611**



## Summary

<b>Production Name</b>	ADCK5 Rabbit Polyclonal Antibody
<b>Description</b>	Rabbit Polyclonal Antibody
<b>Host</b>	Rabbit
<b>Application</b>	WB,ELISA
<b>Reactivity</b>	Human,Rat,Mouse

## Performance

<b>Conjugation</b>	Unconjugated
<b>Modification</b>	Unmodified
<b>Isotype</b>	IgG
<b>Clonality</b>	Polyclonal
<b>Form</b>	Liquid
<b>Storage</b>	Store at 4°C short term. Aliquot and store at -20°C long term. Avoid freeze/thaw cycles.
<b>Buffer</b>	Liquid in PBS containing 50% glycerol, 0.5% BSA and 0.02% New type preservative N.
<b>Purification</b>	Affinity purification

## Immunogen

<b>Gene Name</b>	ADCK5
<b>Alternative Names</b>	ADCK5; Uncharacterized aarF domain-containing protein kinase 5
<b>Gene ID</b>	203054.0
<b>SwissProt ID</b>	Q3MIX3.The antiserum was produced against synthesized peptide derived from human ADCK5. AA range:151-200

## Application

<b>Dilution Ratio</b>	WB 1:500 - 1:2000. ELISA: 1:20000
<b>Molecular Weight</b>	66kD

## Background

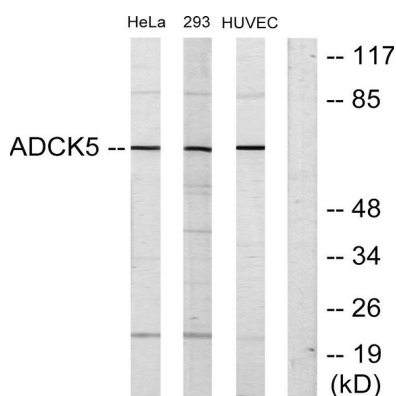
**Product Name: ADCK5 Rabbit Polyclonal Antibody**  
**Catalog #: APRab06611**



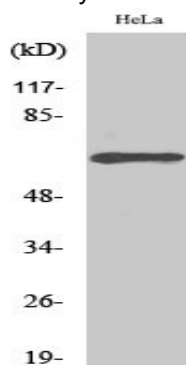
function: The function of this protein is not yet clear. It is not known if it has protein kinase activity and what type of substrate it would phosphorylate (Ser, Thr or Tyr)., similarity: Belongs to the protein kinase superfamily. ADCK protein kinase family., similarity: Contains 1 protein kinase domain., function: The function of this protein is not yet clear. It is not known if it has protein kinase activity and what type of substrate it would phosphorylate (Ser, Thr or Tyr)., similarity: Belongs to the protein kinase superfamily. ADCK protein kinase family., similarity: Contains 1 protein kinase domain.,

## Research Area

## Image Data



Western blot analysis of lysates from HeLa, 293, and HUVEC cells, using ADCK5 Antibody. The lane on the right is blocked with the synthesized peptide.



Western Blot analysis of various cells using ADCK5 Polyclonal Antibody

## Note

For research use only.