

Product Name: ADAMTS-16 Rabbit Polyclonal Antibody
Catalog #: APRab06597



Summary

Production Name	ADAMTS-16 Rabbit Polyclonal Antibody
Description	Rabbit Polyclonal Antibody
Host	Rabbit
Application	IHC,ELISA
Reactivity	Human,Mouse

Performance

Conjugation	Unconjugated
Modification	Unmodified
Isotype	IgG
Clonality	Polyclonal
Form	Liquid
Storage	Store at 4°C short term. Aliquot and store at -20°C long term. Avoid freeze/thaw cycles.
Buffer	Liquid in PBS containing 50% glycerol, 0.5% BSA and 0.02% New type preservative N.
Purification	Affinity purification

Immunogen

Gene Name	ADAMTS16
Alternative Names	ADAMTS16; KIAA2029; A disintegrin and metalloproteinase with thrombospondin motifs 16; ADAM-TS 16; ADAM-TS16; ADAMTS-16
Gene ID	170690.0
SwissProt ID	Q8TE57.Synthesized peptide derived from ADAMTS-16 . at AA range: 440-520

Application

Dilution Ratio	IHC 1:100-1:300 ELISA: 1:40000
Molecular Weight	

Background

This gene encodes a member of the ADAMTS (a disintegrin and metalloproteinase with thrombospondin motifs) protein

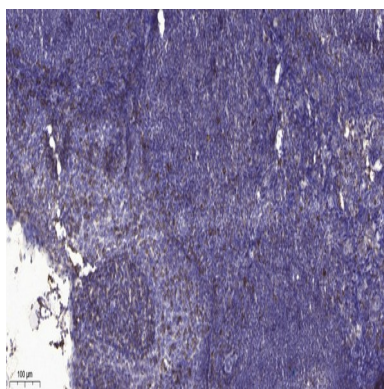
Product Name: ADAMTS-16 Rabbit Polyclonal Antibody
Catalog #: APRab06597



family. ADAMTS family members share several distinct protein modules, including a propeptide region, a metalloproteinase domain, a disintegrin-like domain, and a thrombospondin type 1 (TS) motif. Individual members of this family differ in the number of C-terminal TS motifs, and some have unique C-terminal domains. The encoded preproprotein is proteolytically processed to generate the mature protein, which may inhibit chondrosarcoma cell proliferation and migration. This gene may regulate blood pressure. [provided by RefSeq, May 2016],cofactor: Binds 1 zinc ion per subunit.,domain: The conserved cysteine present in the cysteine-switch motif binds the catalytic zinc ion, thus inhibiting the enzyme. The dissociation of the cysteine from the zinc ion upon the activation-peptide release activates the enzyme.,domain: The spacer domain and the TSP type-1 domains are important for a tight interaction with the extracellular matrix.,PTM: The precursor is cleaved by a furin endopeptidase.,similarity: Contains 1 disintegrin domain.,similarity: Contains 1 peptidase M12B domain.,similarity: Contains 1 PLAC domain.,similarity: Contains 6 TSP type-1 domains.,tissue specificity: Expressed in fetal lung and kidney and in adult prostate and ovary.,

Research Area

Image Data



Immunohistochemical analysis of paraffin-embedded human tonsil. 1, Antibody was diluted at 1:200 (4° overnight) . 2, Tris-EDTA, pH 9.0 was used for antigen retrieval. 3, Secondary antibody was diluted at 1:200 (room temperature, 30min) .

Note

For research use only.