

Product Name: Acrosin Rabbit Polyclonal Antibody
Catalog #: APRab06527



Summary

Production Name	Acrosin Rabbit Polyclonal Antibody
Description	Rabbit Polyclonal Antibody
Host	Rabbit
Application	WB,IHC,
Reactivity	Human,Rat,Mouse

Performance

Conjugation	Unconjugated
Modification	Unmodified
Isotype	IgG
Clonality	Polyclonal
Form	Liquid
Storage	Store at 4°C short term. Aliquot and store at -20°C long term. Avoid freeze/thaw cycles.
Buffer	Liquid in PBS containing 50% glycerol, 0.5% BSA and 0.02% New type preservative N.
Purification	Affinity purification

Immunogen

Gene Name	ACR
Alternative Names	ACR; ACRS; Acrosin
Gene ID	49.0
SwissProt ID	P10323.Synthesized peptide derived from Acrosin . at AA range: 40-120

Application

Dilution Ratio	IHC-p: 100-300.WB 1:500 - 1:2000. ELISA: 1:5000..
Molecular Weight	45kD

Background

Acrosin is the major proteinase present in the acrosome of mature spermatozoa. It is a typical serine proteinase with

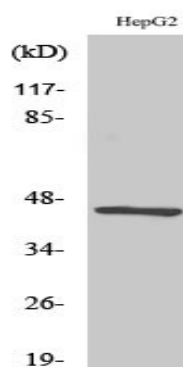
Product Name: Acrosin Rabbit Polyclonal Antibody
Catalog #: APRab06527



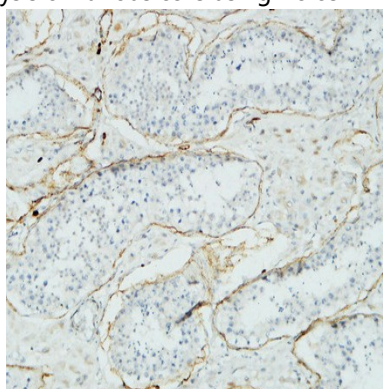
trypsin-like specificity. It is stored in the acrosome in its precursor form, proacrosin. The active enzyme functions in the lysis of the zona pellucida, thus facilitating penetration of the sperm through the innermost glycoprotein layers of the ovum. The mRNA for proacrosin is synthesized only in the postmeiotic stages of spermatogenesis. In humans proacrosin first appears in the haploid spermatids. [provided by RefSeq, Jul 2008],catalytic activity:Preferential cleavage: Arg-|-Xaa, Lys-|-Xaa.,function:Acrosin is the major protease of mammalian spermatozoa. It is a serine protease of trypsin-like cleavage specificity, it is synthesized in a zymogen form, proacrosin and stored in the acrosome.,similarity:Belongs to the peptidase S1 family.,similarity:Contains 1 peptidase S1 domain.,subunit:Heavy chain (catalytic) and a light chain linked by two disulfide bonds.,

Research Area

Image Data

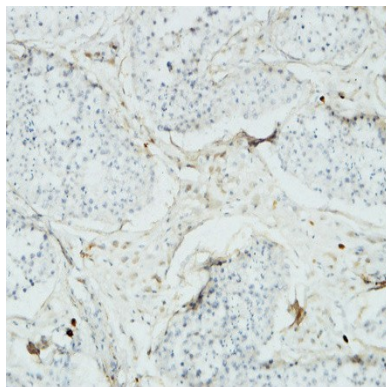


Western Blot analysis of various cells using Acrosin Polyclonal Antibody

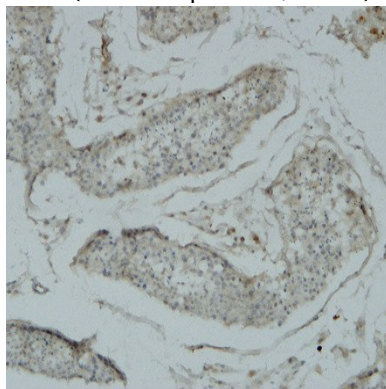


Immunohistochemical analysis of paraffin-embedded Human testis. 1, Antibody was diluted at 1:100 (4°,overnight) . 2, High-pressure and temperature EDTA, pH8.0 was used for antigen retrieval. 3,Secondary antibody was diluted at 1:200 (room temperature, 30min) .

Product Name: Acrosin Rabbit Polyclonal Antibody
Catalog #: APRab06527



Immunohistochemical analysis of paraffin-embedded Human testis. 1, Antibody was diluted at 1:100 (4°,overnight) . 2, High-pressure and temperature EDTA, pH8.0 was used for antigen retrieval. 3,Secondary antibody was diluted at 1:200 (room temperature, 30min) .



Immunohistochemical analysis of paraffin-embedded Human testis. 1, Antibody was diluted at 1:100 (4°,overnight) . 2, High-pressure and temperature EDTA, pH8.0 was used for antigen retrieval. 3,Secondary antibody was diluted at 1:200 (room temperature, 30min) .

Note

For research use only.