

## Summary

<b>Production Name</b>	ABHD2 Rabbit Polyclonal Antibody
<b>Description</b>	Rabbit Polyclonal Antibody
<b>Host</b>	Rabbit
<b>Application</b>	IF, WB, ELISA
<b>Reactivity</b>	Human, Mouse

## Performance

<b>Conjugation</b>	Unconjugated
<b>Modification</b>	Unmodified
<b>Isotype</b>	IgG
<b>Clonality</b>	Polyclonal
<b>Form</b>	Liquid
<b>Storage</b>	Store at 4°C short term. Aliquot and store at -20°C long term. Avoid freeze/thaw cycles.
<b>Buffer</b>	Liquid in PBS containing 50% glycerol, 0.5% BSA and 0.02% New type preservative N.
<b>Purification</b>	Affinity purification

## Immunogen

<b>Gene Name</b>	ABHD2
<b>Alternative Names</b>	ABHD2; LABH2; Abhydrolase domain-containing protein 2; Lung alpha/beta hydrolase 2; Protein PHPS1-2
<b>Gene ID</b>	11057.0
<b>SwissProt ID</b>	P08910. The antiserum was produced against synthesized peptide derived from human ABHD2. AA range: 251-300

## Application

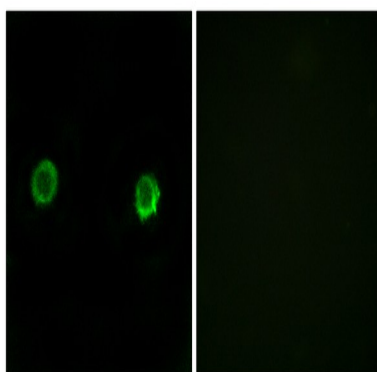
<b>Dilution Ratio</b>	WB 1:500 - 1:2000. IF 1:200 - 1:1000. ELISA: 1:40000. Not yet tested in other applications.
<b>Molecular Weight</b>	48kD

## Background

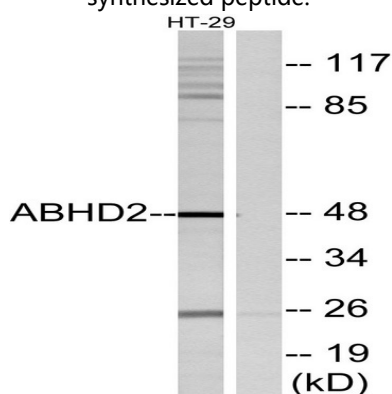
This gene encodes a protein containing an alpha/beta hydrolase fold, which is a catalytic domain found in a very wide range of enzymes. The function of this protein has not been determined. Alternative splicing of this gene results in two transcript variants encoding the same protein. [provided by RefSeq, Jul 2008],caution:Was originally (PubMed:2843827) thought to be a G-coupled receptor.,function:May play a role in smooth muscle cells migration.,similarity:Belongs to the AB hydrolase superfamily. AB hydrolase 4 family.,

## Research Area

## Image Data

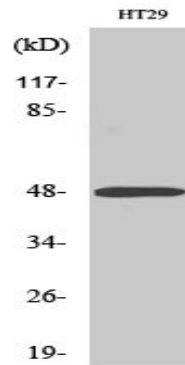


Immunofluorescence analysis of MCF-7 cells, using ABHD2 Antibody. The picture on the right is blocked with the synthesized peptide.



Western blot analysis of lysates from HT29 cells, using ABHD2 Antibody. The lane on the right is blocked with the synthesized peptide.

**Product Name: ABHD2 Rabbit Polyclonal Antibody**  
**Catalog #: APRab06437**



Western Blot analysis of various cells using ABHD2 Polyclonal Antibody

**Note**

For research use only.