

**Product Name: ABHD11 Rabbit Polyclonal Antibody**  
**Catalog #: APRab06432**



## Summary

<b>Production Name</b>	ABHD11 Rabbit Polyclonal Antibody
<b>Description</b>	Rabbit Polyclonal Antibody
<b>Host</b>	Rabbit
<b>Application</b>	WB,ELISA
<b>Reactivity</b>	Human,Rat,Mouse

## Performance

<b>Conjugation</b>	Unconjugated
<b>Modification</b>	Unmodified
<b>Isotype</b>	IgG
<b>Clonality</b>	Polyclonal
<b>Form</b>	Liquid
<b>Storage</b>	Store at 4°C short term. Aliquot and store at -20°C long term. Avoid freeze/thaw cycles.
<b>Buffer</b>	Liquid in PBS containing 50% glycerol, 0.5% BSA and 0.02% New type preservative N.
<b>Purification</b>	Affinity purification

## Immunogen

<b>Gene Name</b>	ABHD11
<b>Alternative Names</b>	ABHD11; WBSCR21; PP1226; Abhydrolase domain-containing protein 11; Williams-Beuren syndrome chromosomal region 21 protein
<b>Gene ID</b>	83451.0
<b>SwissProt ID</b>	Q8NFV4.The antiserum was produced against synthesized peptide derived from human ABHD11. AA range:161-210

## Application

<b>Dilution Ratio</b>	WB 1:500 - 1:2000. ELISA: 1:20000. Not yet tested in other applications.
<b>Molecular Weight</b>	32kD

**Product Name: ABHD11 Rabbit Polyclonal Antibody**  
**Catalog #: APRab06432**

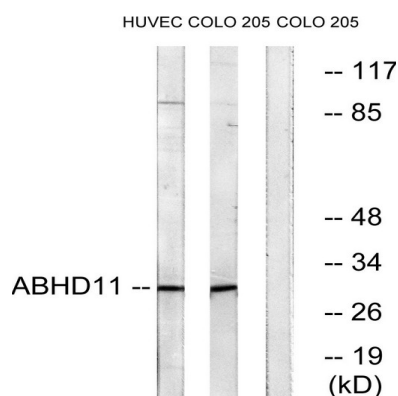


## Background

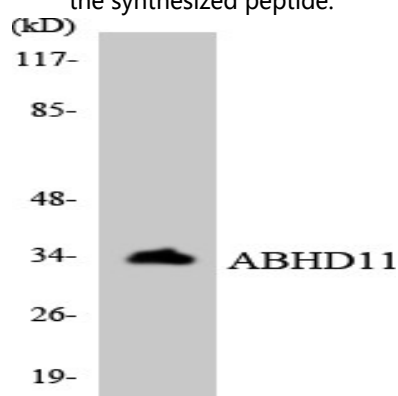
This gene encodes a protein containing an alpha/beta hydrolase fold domain. This gene is deleted in Williams syndrome, a multisystem developmental disorder caused by the deletion of contiguous genes at 7q11.23. [provided by RefSeq, Mar 2016],caution:It is uncertain whether Met-1 or Met-10 is the initiator.,sequence caution:Wrong choice of frame.,similarity:Belongs to the AB hydrolase superfamily.,tissue specificity:Ubiquitously expressed.,

## Research Area

## Image Data



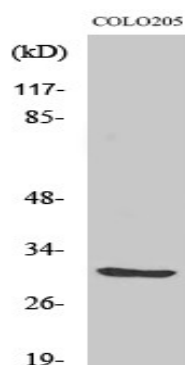
Western blot analysis of lysates from COLO and HUVEC cells, using ABHD11 Antibody. The lane on the right is blocked with the synthesized peptide.



Western blot analysis of the lysates from HeLa cells using ABHD11 antibody.

**Product Name: ABHD11 Rabbit Polyclonal Antibody**  
**Catalog #: APRab06432**

---



Western Blot analysis of various cells using ABHD11 Polyclonal Antibody

### **Note**

For research use only.