

Product Name: AAK1 Rabbit Polyclonal Antibody
Catalog #: APRab06377



Summary

Production Name	AAK1 Rabbit Polyclonal Antibody
Description	Rabbit Polyclonal Antibody
Host	Rabbit
Application	WB,ELISA
Reactivity	Human,Mouse,Rat,Monkey

Performance

Conjugation	Unconjugated
Modification	Unmodified
Isotype	IgG
Clonality	Polyclonal
Form	Liquid
Storage	Store at 4°C short term. Aliquot and store at -20°C long term. Avoid freeze/thaw cycles.
Buffer	Liquid in PBS containing 50% glycerol, 0.5% BSA and 0.02% New type preservative N.
Purification	Affinity purification

Immunogen

Gene Name	AAK1
Alternative Names	AAK1; KIAA1048; AP2-associated protein kinase 1; Adaptor-associated kinase 1
Gene ID	22848.0
SwissProt ID	Q2M2I8.The antiserum was produced against synthesized peptide derived from human AAK1. AA range:271-320

Application

Dilution Ratio	WB 1:500 - 1:2000. ELISA: 1:20000
Molecular Weight	94kD

Background

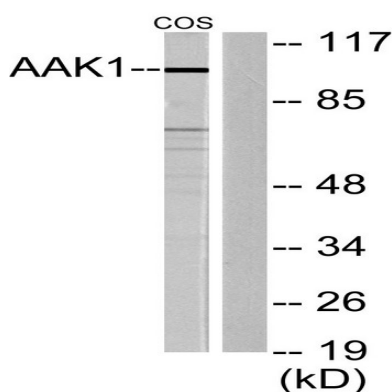
Product Name: AAK1 Rabbit Polyclonal Antibody
Catalog #: APRab06377



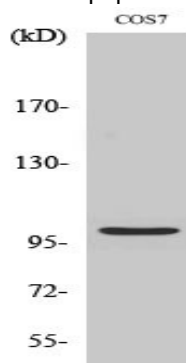
Adaptor-related protein complex 2 (AP-2 complexes) functions during receptor-mediated endocytosis to trigger clathrin assembly, interact with membrane-bound receptors, and recruit endocytic accessory factors. This gene encodes a member of the SNF1 subfamily of Ser/Thr protein kinases. The protein interacts with and phosphorylates a subunit of the AP-2 complex, which promotes binding of AP-2 to sorting signals found in membrane-bound receptors and subsequent receptor endocytosis. Its kinase activity is stimulated by clathrin. Alternatively spliced transcript variants have been described, but their biological validity has not been determined. [provided by RefSeq, Jul 2008],catalytic activity:ATP + a protein = ADP + a phosphoprotein.,enzyme regulation:Stimulated by clathrin.,function:Phosphorylates the AP2M1/mu2 subunit of the adaptor protein complex 2 (AP-2). May play a role in regulating aspects of clathrin-mediated endocytosis.,PTM:Autophosphorylated.,similarity:Belongs to the protein kinase superfamily. Ser/Thr protein kinase family.,similarity:Contains 1 protein kinase domain.,subcellular location:Active when found in clathrin-coated pits at the plasma membrane.,subunit:Interacts with alpha-adaptin and AP-2.,

Research Area

Image Data



Western blot analysis of lysates from COS7 cells, using AAK1 Antibody. The lane on the right is blocked with the synthesized peptide.



Western Blot analysis of various cells using AAK1 Polyclonal Antibody

Product Name: AAK1 Rabbit Polyclonal Antibody
Catalog #: APRab06377



Note

For research use only.