

**Product Name: A Cyclase I Rabbit Polyclonal Antibody**  
**Catalog #: APRab06352**



## Summary

<b>Production Name</b>	A Cyclase I Rabbit Polyclonal Antibody
<b>Description</b>	Rabbit Polyclonal Antibody
<b>Host</b>	Rabbit
<b>Application</b>	WB,ELISA
<b>Reactivity</b>	Human,Mouse

## Performance

<b>Conjugation</b>	Unconjugated
<b>Modification</b>	Unmodified
<b>Isotype</b>	IgG
<b>Clonality</b>	Polyclonal
<b>Form</b>	Liquid
<b>Storage</b>	Store at 4°C short term. Aliquot and store at -20°C long term. Avoid freeze/thaw cycles.
<b>Buffer</b>	Liquid in PBS containing 50% glycerol, 0.5% BSA and 0.02% New type preservative N.
<b>Purification</b>	Affinity purification

## Immunogen

<b>Gene Name</b>	ADCY1
<b>Alternative Names</b>	ADCY1; Adenylate cyclase type 1; ATP pyrophosphate-lyase 1; Adenylate cyclase type I; Adenylyl cyclase 1; Ca(2+)/calmodulin-activated adenylyl cyclase
<b>Gene ID</b>	107.0
<b>SwissProt ID</b>	Q08828.The antiserum was produced against synthesized peptide derived from human ADCY1. AA range:231-280

## Application

<b>Dilution Ratio</b>	WB 1:500 - 1:2000. ELISA: 1:40000..
<b>Molecular Weight</b>	130kD

**Product Name: A Cyclase I Rabbit Polyclonal Antibody**  
**Catalog #: APRab06352**



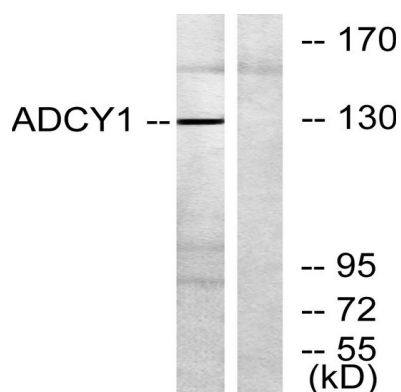
## Background

This gene encodes a member of the of adenylate cyclase gene family that is primarily expressed in the brain. This protein is regulated by calcium/calmodulin concentration and may be involved in brain development. Alternate splicing results in multiple transcript variants. [provided by RefSeq, Aug 2013],catalytic activity:ATP = 3',5'-cyclic AMP + diphosphate.,cofactor:Binds 2 magnesium ions per subunit.,enzyme regulation:Activated by calcium/calmodulin. Inhibited by the G protein beta and gamma subunit complex.,function:This is a calmodulin-sensitive adenylyl cyclase. May be involved in regulatory processes in the central nervous system. It may play a role in memory acquisition and learning.,similarity:Belongs to the adenylyl cyclase class-4/guanylyl cyclase family.,similarity:Contains 2 guanylate cyclase domains.,tissue specificity:Brain, retina and adrenal medulla.,

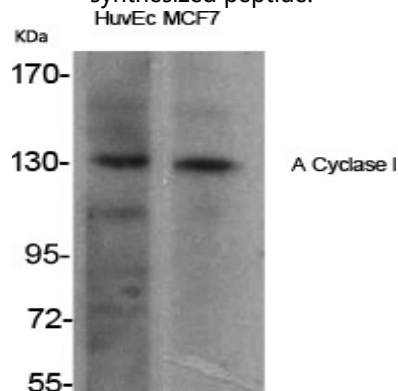
## Research Area

Purine metabolism;Calcium;Chemokine;Oocyte meiosis;Vascular smooth muscle contraction;Gap junction;Long-term potentiation;GnRH;Progesterone-mediated oocyte maturation;Melanogenesis;Dilated cardiomyopathy;

## Image Data

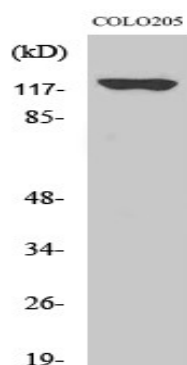


Western blot analysis of lysates from COLO205 cells, using ADCY1 Antibody. The lane on the right is blocked with the synthesized peptide.



Western Blot analysis of various cells using A Cyclase I Polyclonal Antibody

**Product Name: A Cyclase I Rabbit Polyclonal Antibody**  
**Catalog #: APRab06352**



Western Blot analysis of COLO205 cells using A Cyclase I Polyclonal Antibody

### **Note**

For research use only.