

**Product Name: 14-3-3  $\theta$  Rabbit Polyclonal Antibody**  
**Catalog #: APRab06285**



## Summary

<b>Production Name</b>	14-3-3 $\theta$ Rabbit Polyclonal Antibody
<b>Description</b>	Rabbit Polyclonal Antibody
<b>Host</b>	Rabbit
<b>Application</b>	WB,ELISA
<b>Reactivity</b>	Human,Mouse,Rat

## Performance

<b>Conjugation</b>	Unconjugated
<b>Modification</b>	Unmodified
<b>Isotype</b>	IgG
<b>Clonality</b>	Polyclonal
<b>Form</b>	Liquid
<b>Storage</b>	Store at 4°C short term. Aliquot and store at -20°C long term. Avoid freeze/thaw cycles.
<b>Buffer</b>	Liquid in PBS containing 50% glycerol, 0.5% BSA and 0.02% New type preservative N.
<b>Purification</b>	Affinity purification

## Immunogen

<b>Gene Name</b>	YWHAQ
<b>Alternative Names</b>	YWHAQ; 14-3-3 protein theta; 14-3-3 protein T-cell; 14-3-3 protein tau; Protein HS1
<b>Gene ID</b>	10971.0
<b>SwissProt ID</b>	P27348.The antiserum was produced against synthesized peptide derived from human 14-3-3 thet. AA range:41-90

## Application

<b>Dilution Ratio</b>	WB 1:500 - 1:2000. ELISA: 1:20000
<b>Molecular Weight</b>	28kD

## Background

**Product Name: 14-3-3  $\theta$  Rabbit Polyclonal Antibody**  
**Catalog #: APRab06285**

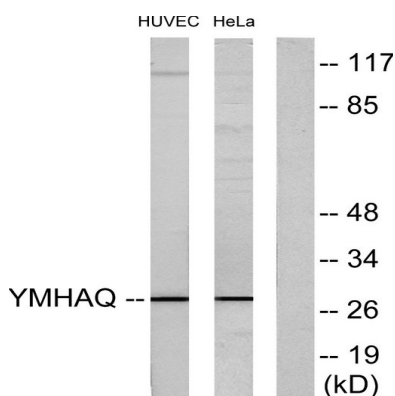


This gene product belongs to the 14-3-3 family of proteins which mediate signal transduction by binding to phosphoserine-containing proteins. This highly conserved protein family is found in both plants and mammals, and this protein is 99% identical to the mouse and rat orthologs. This gene is upregulated in patients with amyotrophic lateral sclerosis. It contains in its 5' UTR a 6 bp tandem repeat sequence which is polymorphic, however, there is no correlation between the repeat number and the disease. [provided by RefSeq, Jul 2008],function:Adapter protein implicated in the regulation of a large spectrum of both general and specialized signaling pathway. Binds to a large number of partners, usually by recognition of a phosphoserine or phosphothreonine motif. Binding generally results in the modulation of the activity of the binding partner.,similarity:Belongs to the 14-3-3 family.,subcellular location:In neurons, axonally transported to the nerve terminals.,subunit:Homodimer. Interacts with PCTK1 (By similarity). Interacts with SSH1. Interacts with CDKN1B ('Thr-198' phosphorylated form); the interaction translocates CDKN1B to the cytoplasm.,tissue specificity:Abundantly expressed in brain, heart and pancreas, and at lower levels in kidney and placenta. Up-regulated in the lumbar spinal cord from patients with sporadic amyotrophic lateral sclerosis (ALS) compared with controls, with highest levels of expression in individuals with predominant lower motor neuron involvement.,

## Research Area

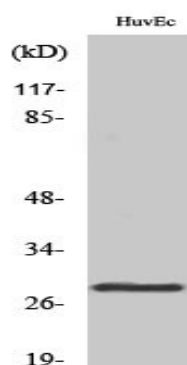
Cell\_Cycle\_G1S;Cell\_Cycle\_G2M\_DNA;Oocyte meiosis;Neurotrophin;Pathogenic Escherichia coli infection;

## Image Data



Western blot analysis of lysates from HUVEC and HeLa cells, using 14-3-3  $\theta$  Antibody. The lane on the right is blocked with the synthesized peptide.

**Product Name: 14-3-3  $\theta$  Rabbit Polyclonal Antibody**  
**Catalog #: APRab06285**



Western Blot analysis of various cells using 14-3-3  $\theta$  Polyclonal Antibody diluted at 1 : 1000

### **Note**

For research use only.