

**Product Name: Nrf2 (Acetyl Lys599) Rabbit Polyclonal Antibody**  
**Catalog #: APRab06235**



---

## Summary

<b>Production Name</b>	Nrf2 (Acetyl Lys599) Rabbit Polyclonal Antibody
<b>Description</b>	Rabbit Polyclonal Antibody
<b>Host</b>	Rabbit
<b>Application</b>	WB,IHC,IF,ELISA
<b>Reactivity</b>	Human,Mouse,Rat

## Performance

<b>Conjugation</b>	Unconjugated
<b>Modification</b>	Acetyl Antibody
<b>Isotype</b>	IgG
<b>Clonality</b>	Polyclonal
<b>Form</b>	Liquid
<b>Storage</b>	Store at 4°C short term. Aliquot and store at -20°C long term. Avoid freeze/thaw cycles.
<b>Buffer</b>	Liquid in PBS containing 50% glycerol, 0.5% BSA and 0.02% New type preservative N.
<b>Purification</b>	Affinity purification

## Immunogen

<b>Gene Name</b>	NFE2L2
<b>Alternative Names</b>	NFE2L2; NRF2; Nuclear factor erythroid 2-related factor 2; NF-E2-related factor 2; NFE2-related factor 2; HEBP1; Nuclear factor, erythroid derived 2, like 2
<b>Gene ID</b>	4780.0
<b>SwissProt ID</b>	Q16236.Synthesized acetyl-peptide derived from the C-terminal region of human Nrf2 around the acetylation site of K599.

## Application

<b>Dilution Ratio</b>	WB 1:500 - 1:2000. IHC-p: 1:100-300 ELISA: 1:10000.. IF 1:50-200
<b>Molecular Weight</b>	75-100kD

**Product Name: Nrf2 (Acetyl Lys599) Rabbit Polyclonal Antibody**  
**Catalog #: APRab06235**

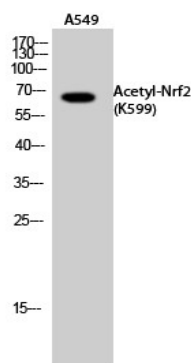


## Background

This gene encodes a transcription factor which is a member of a small family of basic leucine zipper (bZIP) proteins. The encoded transcription factor regulates genes which contain antioxidant response elements (ARE) in their promoters; many of these genes encode proteins involved in response to injury and inflammation which includes the production of free radicals. Multiple transcript variants encoding different isoforms have been characterized for this gene. [provided by RefSeq, Sep 2015],domain:Acidic activation domain in the N-terminus, and DNA binding domain in the C-terminus.,function:Transcription activator that binds to antioxidant response (ARE) elements in the promoter regions of target genes. Important for the coordinated up-regulation of genes in response to oxidative stress. May be involved in the transcriptional activation of genes of the beta-globin cluster by mediating enhancer activity of hypersensitive site 2 of the beta-globin locus control region.,PTM:Phosphorylation of Ser-40 by PKC in response to oxidative stress dissociates NFE2L2 from its cytoplasmic inhibitor KEAP1, promoting its translocation into the nucleus.,similarity:Belongs to the bZIP family.,similarity:Belongs to the bZIP family. CNC subfamily.,similarity:Contains 1 bZIP domain.,subcellular location:Cytosolic under unstressed conditions, translocates into the nucleus upon induction by electrophilic agents.,subunit:Heterodimer. May bind DNA with an unknown protein. Interacts with KEAP1. Interacts via its leucine-zipper domain with the coiled-coil domain of PMF1.,tissue specificity:Widely expressed. Highest expression in adult muscle, kidney, lung, liver and in fetal muscle.,

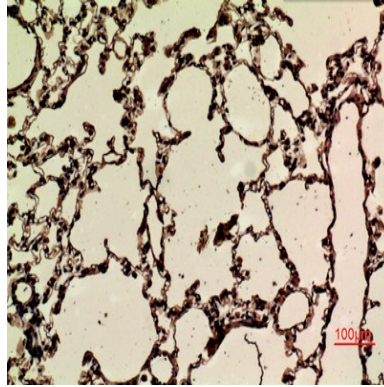
## Research Area

## Image Data

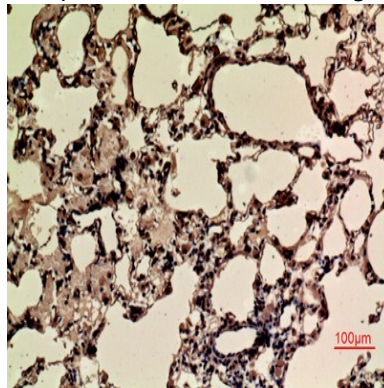


Western Blot analysis of A549 cells using Acetyl-Nrf2 (K599) Polyclonal Antibody. Antibody was diluted at 1:1000.  
Secondary antibody was diluted at 1:20000

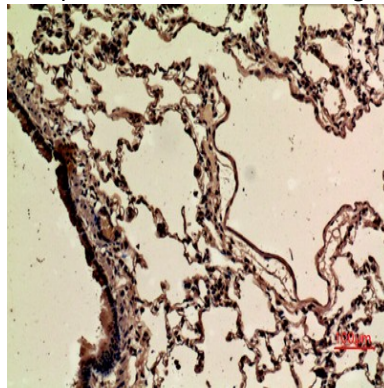
**Product Name: Nrf2 (Acetyl Lys599) Rabbit Polyclonal Antibody**  
**Catalog #: APRab06235**



Immunohistochemical analysis of paraffin-embedded rat-lung, antibody was diluted at 1:100

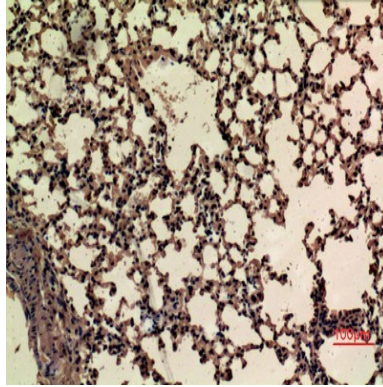


Immunohistochemical analysis of paraffin-embedded rat-lung, antibody was diluted at 1:100

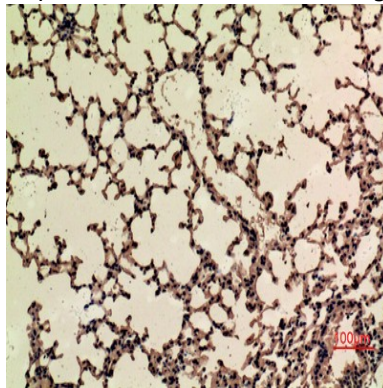


Immunohistochemical analysis of paraffin-embedded rat-lung, antibody was diluted at 1:100

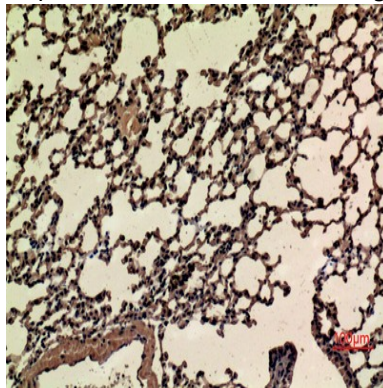
**Product Name: Nrf2 (Acetyl Lys599) Rabbit Polyclonal Antibody**  
**Catalog #: APRab06235**



Immunohistochemical analysis of paraffin-embedded mouse-lung, antibody was diluted at 1:100



Immunohistochemical analysis of paraffin-embedded mouse-lung, antibody was diluted at 1:100



Immunohistochemical analysis of paraffin-embedded mouse-lung, antibody was diluted at 1:100

## **Note**

For research use only.