

Product Name: SRPK1 (Phospho-Thr601) Rabbit Polyclonal Antibody
Catalog #: APRab06086

Summary

Production Name	SRPK1 (Phospho-Thr601) Rabbit Polyclonal Antibody
Description	Rabbit Polyclonal Antibody
Host	Rabbit
Application	WB
Reactivity	Human,Mouse,Rat

Performance

Conjugation	Unconjugated
Modification	Phospho Antibody
Isotype	IgG
Clonality	Polyclonal
Form	Liquid
Storage	Store at 4°C short term. Aliquot and store at -20°C long term. Avoid freeze/thaw cycles.
Buffer	Liquid in PBS containing 50% glycerol, 0.5% BSA and 0.02% New type preservative N.
Purification	Affinity purification

Immunogen

Gene Name	SRPK1
Alternative Names	SRSF protein kinase 1 (EC 2.7.11.1) (SFRS protein kinase 1) (Serine/arginine-rich protein-specific kinase 1) (SR-protein-specific kinase 1)
Gene ID	6732.0
SwissProt ID	Q96SB4.

Application

Dilution Ratio	WB 1:500-2000
Molecular Weight	

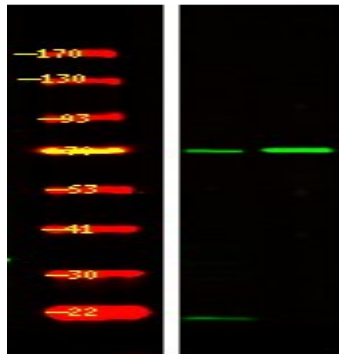
Background

**Product Name: SRPK1 (Phospho-Thr601) Rabbit
Polyclonal Antibody
Catalog #: AP Rab06086**

catalytic activity:ATP + a protein = ADP + a phosphoprotein.,cofactor:Magnesium.,enzyme regulation:Activated by phosphorylation on Ser-51 and Ser-555.,function:Plays a central role in the regulatory network for splicing, controlling the intranuclear distribution of splicing factors in interphase cells and the reorganization of nuclear speckles during mitosis. Hyperphosphorylates RS domain-containing proteins such as SFRS1 and SFRS2 on serine residues during metaphase but at lower levels during interphase. Locks onto SFRS1 to form a stable complex and processively phosphorylates the RS domain. Appears to mediate HBV core protein phosphorylation which is a prerequisite for pregenomic RNA encapsidation into viral capsids.,similarity:Belongs to the protein kinase superfamily. CMGC Ser/Thr protein kinase family.,similarity:Contains 1 protein kinase domain.,subunit:Present in a seven component complex, the toposome, which separates entangled circular chromatin DNA during chromosome segregation. The extended N-terminal domain of isoform 1 binds to the nuclear scaffold-associated protein SAFB suggesting this isoform may phosphorylate splicing factors in close vicinity to the nuclear matrix.,tissue specificity:Isoform 2 is predominantly expressed in the testis but is also present at lower levels in heart, ovary, small intestine, liver, kidney, pancreas and skeletal muscle. Isoform 1 is only seen in the testis, at lower levels than isoform 2.,

Research Area

Image Data



Western Blot analysis of 1 HepG2 cell, 2 LPS 100ng/mL 30min treated ,using primary antibody at 1:1000 dilution.
Secondary antibody was diluted at 1:10000

Note

For research use only.