

**Product Name: Sodium Potassium ATPase alpha-1
(Phospho-Tyr260) Rabbit Polyclonal Antibody
Catalog #: APRab06083**

Summary

Production Name	Sodium Potassium ATPase alpha-1 (Phospho-Tyr260) Rabbit Polyclonal Antibody
Description	Rabbit Polyclonal Antibody
Host	Rabbit
Application	ELISA,WB,
Reactivity	Human,Rat,Mouse

Performance

Conjugation	Unconjugated
Modification	Phospho Antibody
Isotype	IgG
Clonality	Polyclonal
Form	Liquid
Storage	Store at 4°C short term. Aliquot and store at -20°C long term. Avoid freeze/thaw cycles.
Buffer	Liquid in PBS containing 50% glycerol, 0.5% BSA and 0.02% New type preservative N.
Purification	Affinity purification

Immunogen

Gene Name	ATP1A1
Alternative Names	Sodium/potassium-transporting ATPase subunit alpha-1 (Na(+)/K(+) ATPase alpha-1 subunit) (EC 3.6.3.9) (Sodium pump subunit alpha-1)
Gene ID	476.0
SwissProt ID	P05023.Synthetic peptide from human protein at AA range: 230-290

Application

Dilution Ratio	WB 1:500-2000 ELISA 2000-20000
Molecular Weight	115kD

**Product Name: Sodium Potassium ATPase alpha-1
(Phospho-Tyr260) Rabbit Polyclonal Antibody
Catalog #: APRab06083**

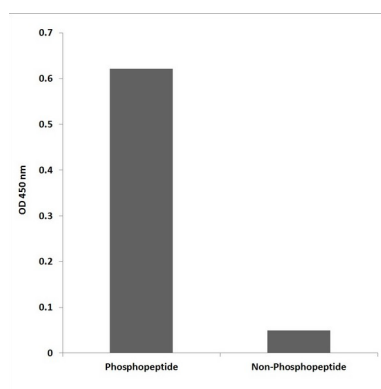
Background

The protein encoded by this gene belongs to the family of P-type cation transport ATPases, and to the subfamily of Na⁺/K⁺ -ATPases. Na⁺/K⁺ -ATPase is an integral membrane protein responsible for establishing and maintaining the electrochemical gradients of Na and K ions across the plasma membrane. These gradients are essential for osmoregulation, for sodium-coupled transport of a variety of organic and inorganic molecules, and for electrical excitability of nerve and muscle. This enzyme is composed of two subunits, a large catalytic subunit (alpha) and a smaller glycoprotein subunit (beta). The catalytic subunit of Na⁺/K⁺ -ATPase is encoded by multiple genes. This gene encodes an alpha 1 subunit. Multiple transcript variants encoding different isoforms have been found for this gene. [provided by RefSeq, May 2009],catalytic activity:ATP + H₂O + Na⁽⁺⁾(In) + K⁽⁺⁾(Out) = ADP + phosphate + Na⁽⁺⁾(Out) + K⁽⁺⁾(In),,function:This is the catalytic component of the active enzyme, which catalyzes the hydrolysis of ATP coupled with the exchange of sodium and potassium ions across the plasma membrane. This action creates the electrochemical gradient of sodium and potassium ions, providing the energy for active transport of various nutrients.,PTM:Phosphorylation on Tyr-10 modulates pumping activity.,similarity:Belongs to the cation transport ATPase (P-type) family.,similarity:Belongs to the cation transport ATPase (P-type) family. Type IIC subfamily.,subcellular location:Identified by mass spectrometry in melanosome fractions from stage I to stage IV.,subunit:Composed of three subunits: alpha (catalytic), beta and gamma. Binds the HLA class II histocompatibility antigen, DR1.,

Research Area

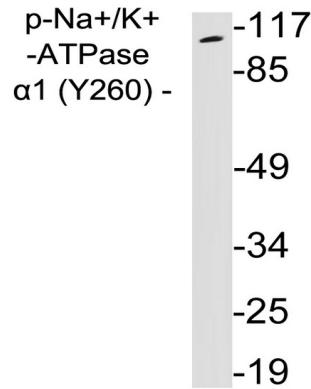
Cardiac muscle contraction;Aldosterone-regulated sodium reabsorption;

Image Data

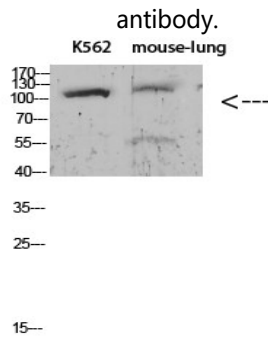


Enzyme-Linked Immunosorbent Assay (Phospho-ELISA) for Immunogen Phosphopeptide (Phospho-left) and Non-Phosphopeptide (Phospho-right) , using Na⁺/K⁺-ATPase α1 (Phospho-Tyr260) Antibody

**Product Name: Sodium Potassium ATPase alpha-1
(Phospho-Tyr260) Rabbit Polyclonal Antibody
Catalog #: APRab06083**



Western blot analysis of lysates from 293 cells treated with PMA, using phospho-Na⁺/K⁺-ATPase α1 (Phospho-Tyr260)



Western blot analysis of KB Hela lysate, antibody was diluted at 1000. Secondary antibody was diluted at 1:20000

Note

For research use only.