

**Product Name: S100A9 (Phospho-Thr113) Rabbit Polyclonal Antibody**  
**Catalog #: APRab06076**

---

## Summary

<b>Production Name</b>	S100A9 (Phospho-Thr113) Rabbit Polyclonal Antibody
<b>Description</b>	Rabbit Polyclonal Antibody
<b>Host</b>	Rabbit
<b>Application</b>	WB
<b>Reactivity</b>	Human,Mouse,Rat

## Performance

<b>Conjugation</b>	Unconjugated
<b>Modification</b>	Phospho Antibody
<b>Isotype</b>	IgG
<b>Clonality</b>	Polyclonal
<b>Form</b>	Liquid
<b>Storage</b>	Store at 4°C short term. Aliquot and store at -20°C long term. Avoid freeze/thaw cycles.
<b>Buffer</b>	Liquid in PBS containing 50% glycerol, 0.5% BSA and 0.02% New type preservative N.
<b>Purification</b>	Affinity purification

## Immunogen

<b>Gene Name</b>	S100A9 CAGB CFAG MRP14 Protein S100-A9 (Calgranulin-B) (Calprotectin L1H subunit) (Leukocyte L1 complex heavy chain) (Migration inhibitory factor-related protein 14) (MRP-14) (p14) (S100 calcium-binding protein A9)
<b>Alternative Names</b>	
<b>Gene ID</b>	6280.0
<b>SwissProt ID</b>	P06702.

## Application

<b>Dilution Ratio</b>	WB 1:500-2000
<b>Molecular Weight</b>	13kD

**Product Name: S100A9 (Phospho-Thr113) Rabbit Polyclonal Antibody**  
**Catalog #: APRab06076**

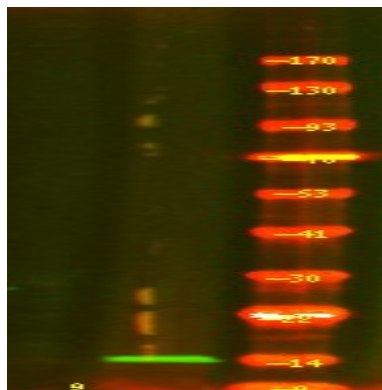
---

## Background

function: Expressed by macrophages in acutely inflamed tissues and in chronic inflammations. Seem to be an inhibitor of protein kinases. Also expressed in epithelial cells constitutively or induced during dermatoses. May interact with components of the intermediate filaments in monocytes and epithelial cells., miscellaneous: Has been shown to bind calcium., similarity: Belongs to the S-100 family., similarity: Contains 2 EF-hand domains., subunit: Interacts with CEACAM3 in a calcium-dependent manner.,

## Research Area

## Image Data



Western Blot analysis of 1 A549 cell, 2 LPS 100ng/mL 30min treated ,using primary antibody at 1:1000 dilution. Secondary antibody was diluted at 1:10000

## Note

For research use only.