

Product Name: ROCK2 (Phospho-Tyr722) Rabbit Polyclonal Antibody
Catalog #: APRab06071

Summary

Production Name	ROCK2 (Phospho-Tyr722) Rabbit Polyclonal Antibody
Description	Rabbit Polyclonal Antibody
Host	Rabbit
Application	WB
Reactivity	Human,Mouse,Rat

Performance

Conjugation	Unconjugated
Modification	Phospho Antibody
Isotype	IgG
Clonality	Polyclonal
Form	Liquid
Storage	Store at 4°C short term. Aliquot and store at -20°C long term. Avoid freeze/thaw cycles.
Buffer	Liquid in PBS containing 50% glycerol, 0.5% BSA and 0.02% New type preservative N.
Purification	Affinity purification

Immunogen

Gene Name	ROCK2 KIAA0619
Alternative Names	Rho-associated protein kinase 2 (EC 2.7.11.1) (Rho kinase 2) (Rho-associated, coiled-coil-containing protein kinase 2) (Rho-associated, coiled-coil-containing protein kinase II) (ROCK-II) (p164 ROCK-2)
Gene ID	9475.0
SwissProt ID	O75116.

Application

Dilution Ratio	WB 1:500-2000
Molecular Weight	153kD

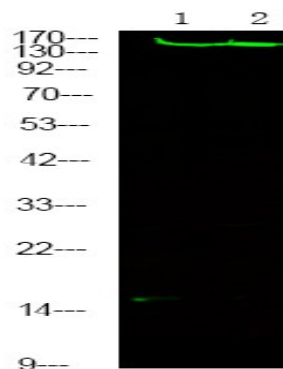
Product Name: ROCK2 (Phospho-Tyr722) Rabbit Polyclonal Antibody
Catalog #: APRab06071

Background

catalytic activity:ATP + a protein = ADP + a phosphoprotein.,enzyme regulation:Activated by RHOA
binding.,function:Protein kinase that phosphorylates a large number of important signaling proteins, and thereby regulates the assembly of the actin cytoskeleton. Promotes formation of stress fibers and of focal adhesion complexes. Plays a role in smooth muscle contraction.,miscellaneous:Inhibited by Y-27632.,PTM:Phosphorylated upon DNA damage, probably by ATM or ATR.,similarity:Belongs to the protein kinase superfamily. AGC Ser/Thr protein kinase family.,similarity:Contains 1 AGC-kinase C-terminal domain.,similarity:Contains 1 PH domain.,similarity:Contains 1 phorbol-ester/DAG-type zinc finger.,similarity:Contains 1 protein kinase domain.,similarity:Contains 1 REM (Hr1) repeat.,subcellular location:Cytoplasmic, and associated with actin microfilaments and the plasma membrane.,subunit:Homodimer. Binds RHOA that has been activated by GTP binding. Binds IRS1, RHOB and RHOC.,

Research Area

Image Data



Western Blot analysis of mouse spleen ,HeLa using primary antibody at 1:1000 dilution. Secondary antibody was diluted at 1:10000

Note

For research use only.