

Product Name: NDR1/2 (Phospho-Thr444/442) Rabbit Polyclonal Antibody
Catalog #: APRab05817



Summary

Production Name	NDR1/2 (Phospho-Thr444/442) Rabbit Polyclonal Antibody
Description	Rabbit Polyclonal Antibody
Host	Rabbit
Application	WB
Reactivity	Human,Mouse,Rat

Performance

Conjugation	Unconjugated
Modification	Phospho Antibody
Isotype	IgG
Clonality	Polyclonal
Form	Liquid
Storage	Store at 4°C short term. Aliquot and store at -20°C long term. Avoid freeze/thaw cycles.
Buffer	Liquid in PBS containing 50% glycerol, 0.5% BSA and 0.02% New type preservative N.
Purification	Affinity purification

Immunogen

Gene Name	STK38 NDR1
Alternative Names	Serine/threonine-protein kinase 38 (EC 2.7.11.1) (NDR1 protein kinase) (Nuclear Dbf2-related kinase 1)
Gene ID	11329.0
SwissProt ID	Q15208.

Application

Dilution Ratio	WB 1:500-2000
Molecular Weight	51kD

Background

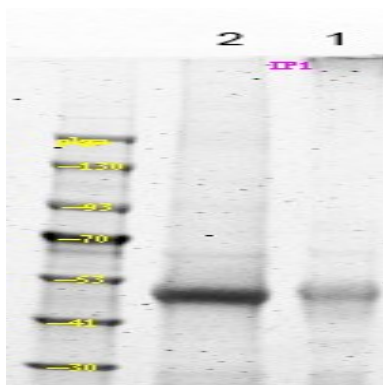
**Product Name: NDR1/2 (Phospho-Thr444/442) Rabbit
Polyclonal Antibody
Catalog #: APRab05817**



catalytic activity:ATP + a protein = ADP + a phosphoprotein.,cofactor:Magnesium.,enzyme regulation:Activated by binding of S100B which releases autoinhibitory N-lobe interactions, enabling ATP to bind and the autophosphorylation of Ser-281. Thr-444 then undergoes calcium-dependent phosphorylation by an upstream kinase. Interactions between phosphorylated Thr-444 and the N-lobe promote additional structural changes that complete the activation of the kinase. Autoinhibition is also released by the binding of MOB1/MOBKL1A and MOB2/HCCA2 to the N-terminal of STK38.,similarity:Belongs to the protein kinase superfamily. AGC Ser/Thr protein kinase family.,similarity:Contains 1 AGC-kinase C-terminal domain.,similarity:Contains 1 protein kinase domain.,subcellular location:Low levels present in the cytoplasm.,subunit:Homodimeric S100B binds two molecules of STK38. Interacts with MOB1 and MOB2.,tissue specificity:Ubiquitously expressed with highest levels observed in peripheral blood leukocytes.,

Research Area

Image Data



Western Blot analysis of 1 MCF-7 cell 2 LPS 100ng/mL 30min treated ,using primary antibody at 1:1000 dilution.
Secondary antibody was diluted at 1:10000

Note

For research use only.