

**Product Name: L-plastin (Phospho-Ser5) Rabbit Polyclonal Antibody**  
**Catalog #: APRab05793**

---

## Summary

<b>Production Name</b>	L-plastin (Phospho-Ser5) Rabbit Polyclonal Antibody
<b>Description</b>	Rabbit Polyclonal Antibody
<b>Host</b>	Rabbit
<b>Application</b>	WB
<b>Reactivity</b>	Human,Mouse,Rat

## Performance

<b>Conjugation</b>	Unconjugated
<b>Modification</b>	Phospho Antibody
<b>Isotype</b>	IgG
<b>Clonality</b>	Polyclonal
<b>Form</b>	Liquid
<b>Storage</b>	Store at 4°C short term. Aliquot and store at -20°C long term. Avoid freeze/thaw cycles.
<b>Buffer</b>	Liquid in PBS containing 50% glycerol, 0.5% BSA and 0.02% New type preservative N.
<b>Purification</b>	Affinity purification

## Immunogen

<b>Gene Name</b>	LCP1 PLS2
<b>Alternative Names</b>	Plastin-2 (L-plastin) (LC64P) (Lymphocyte cytosolic protein 1) (LCP-1)
<b>Gene ID</b>	3936.0
<b>SwissProt ID</b>	P13796.

## Application

<b>Dilution Ratio</b>	WB 1:500-2000
<b>Molecular Weight</b>	69kD

## Background

function:Actin-binding protein found in intestinal microvilli, hair cell stereocilia, and fibroblast

---

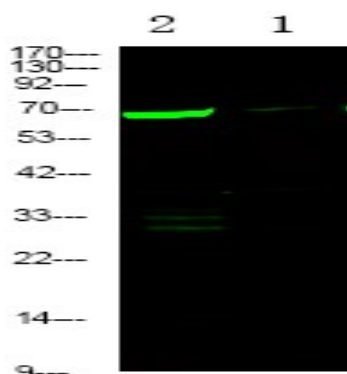
**Product Name: L-plastin (Phospho-Ser5) Rabbit Polyclonal Antibody**  
**Catalog #: APRab05793**

---

filopodia.,PTM:Phosphorylated.,PTM:The N-terminus is blocked.,similarity:Contains 2 actin-binding domains.,similarity:Contains 2 EF-hand domains.,similarity:Contains 4 CH (calponin-homology) domains.,subunit:Monomer.,tissue specificity:Restricted to the spleen and other lymph node-containing organs. Expressed in neutrophils, monocytes, B lymphocytes, and myeloid cells.,

## Research Area

## Image Data



Western Blot analysis of 1 K562 cell, 2 LPS 100ng/mL 30min treated ,using primary antibody at 1:1000 dilution.  
Secondary antibody was diluted at 1:10000

## Note

For research use only.