

Product Name: Zyxin (phospho Ser142) Rabbit Polyclonal Antibody
Catalog #: APRab05647

Summary

Production Name	Zyxin (phospho Ser142) Rabbit Polyclonal Antibody
Description	Rabbit Polyclonal Antibody
Host	Rabbit
Application	WB
Reactivity	Human,Rat,Mouse

Performance

Conjugation	Unconjugated
Modification	Phospho Antibody
Isotype	IgG
Clonality	Polyclonal
Form	Liquid
Storage	Store at 4°C short term. Aliquot and store at -20°C long term. Avoid freeze/thaw cycles.
Buffer	Liquid in PBS containing 50% glycerol, 0.5% BSA and 0.02% New type preservative N.
Purification	Affinity purification

Immunogen

Gene Name	ZYX
Alternative Names	ZYX; Zyxin; Zyxin-2
Gene ID	7791.0
SwissProt ID	Q15942.The antiserum was produced against synthesized peptide derived from human Zyxin around the phosphorylation site of Ser142. AA range:108-157

Application

Dilution Ratio	WB 1:500-1:2000. ELISA: 1:5000.
Molecular Weight	61kD

Background

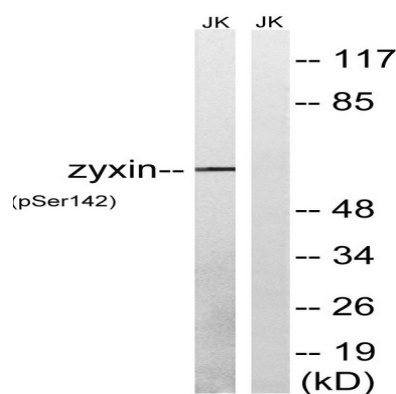
Product Name: Zyxin (phospho Ser142) Rabbit Polyclonal Antibody
Catalog #: APRab05647

Focal adhesions are actin-rich structures that enable cells to adhere to the extracellular matrix and at which protein complexes involved in signal transduction assemble. Zyxin is a zinc-binding phosphoprotein that concentrates at focal adhesions and along the actin cytoskeleton. Zyxin has an N-terminal proline-rich domain and three LIM domains in its C-terminal half. The proline-rich domain may interact with SH3 domains of proteins involved in signal transduction pathways while the LIM domains are likely involved in protein-protein binding. Zyxin may function as a messenger in the signal transduction pathway that mediates adhesion-stimulated changes in gene expression and may modulate the cytoskeletal organization of actin bundles. Alternative splicing results in multiple transcript variants that encode the same isoform. [provided by RefSeq, Jul 2008],function:Adhesion plaque protein. Binds alpha-actinin and the CRP protein. May be a component of a signal transduction pathway that mediates adhesion-stimulated changes in gene expression.,similarity:Belongs to the zyxin/ajuba family.,similarity:Contains 3 LIM zinc-binding domains.,subcellular location:Associates with the actin cytoskeleton near the adhesion plaques. Enters the nucleus in the presence of HESX1.,subunit:Interacts with HPV type 6 protein E6. Does not interact significantly with E6 proteins from HPV types 11, 16, or 18. Interacts, via the Pro-rich regions, with the EVH1 domains of ENAH and VASP. Interaction with ENA/VASP family members is important for their targeting to focal adhesions and the formation of actin-rich structures.,

Research Area

Focal adhesion;

Image Data



Western blot analysis of lysates from Jurkat cells treated with paclitaxel 1uM 24h, using Zyxin (Phospho-Ser142) Antibody. The lane on the right is blocked with the phospho peptide.

Note

For research use only.