

**Product Name: Trk B (phospho Tyr516) Rabbit Polyclonal Antibody**  
**Catalog #: APRab05584**

---

## Summary

<b>Production Name</b>	Trk B (phospho Tyr516) Rabbit Polyclonal Antibody
<b>Description</b>	Rabbit Polyclonal Antibody
<b>Host</b>	Rabbit
<b>Application</b>	ELISA,IHC,WB,
<b>Reactivity</b>	Human,Mouse,Rat

## Performance

<b>Conjugation</b>	Unconjugated
<b>Modification</b>	Phospho Antibody
<b>Isotype</b>	IgG
<b>Clonality</b>	Polyclonal
<b>Form</b>	Liquid
<b>Storage</b>	Store at 4°C short term. Aliquot and store at -20°C long term. Avoid freeze/thaw cycles.
<b>Buffer</b>	Liquid in PBS containing 50% glycerol, 0.5% BSA and 0.02% New type preservative N.
<b>Purification</b>	Affinity purification

## Immunogen

<b>Gene Name</b>	NTRK2
<b>Alternative Names</b>	NTRK2; TRKB; BDNF/NT-3 growth factors receptor; GP145-TrkB; Trk-B; Neurotrophic tyrosine kinase receptor type 2; TrkB tyrosine kinase; Tropomyosin-related kinase B
<b>Gene ID</b>	4915.0
<b>SwissProt ID</b>	Q16620.The antiserum was produced against synthesized peptide derived from human Trk B around the phosphorylation site of Tyr515. AA range:481-530

## Application

<b>Dilution Ratio</b>	WB 1:500 - 1:2000. IHC 1:100 - 1:300. ELISA: 1:5000..
<b>Molecular Weight</b>	145kD

**Product Name: Trk B (phospho Tyr516) Rabbit  
Polyclonal Antibody  
Catalog #: AP Rab05584**



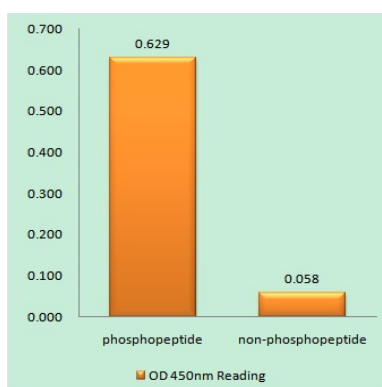
## Background

This gene encodes a member of the neurotrophic tyrosine receptor kinase (NTRK) family. This kinase is a membrane-bound receptor that, upon neurotrophin binding, phosphorylates itself and members of the MAPK pathway. Signalling through this kinase leads to cell differentiation. Mutations in this gene have been associated with obesity and mood disorders. Alternative splicing results in multiple transcript variants. [provided by RefSeq, May 2014], alternative products: Additional isoforms seem to exist, catalytic activity:  $\text{ATP} + \text{a [protein]-L-tyrosine} = \text{ADP} + \text{a [protein]-L-tyrosine phosphate}$ , function: Receptor for brain-derived neurotrophic factor (BDNF), neurotrophin-3 and neurotrophin-4/5 but not nerve growth factor (NGF). Involved in the development and/or maintenance of the nervous system. This is a tyrosine-protein kinase receptor. Known substrates for the TRK receptors are SHC1, PI-3 kinase, and PLC-gamma-1, PTM: Ligand-mediated auto-phosphorylation, similarity: Belongs to the protein kinase superfamily. Tyr protein kinase family, similarity: Belongs to the protein kinase superfamily. Tyr protein kinase family. Insulin receptor subfamily, similarity: Contains 1 protein kinase domain, similarity: Contains 2 Ig-like C2-type (immunoglobulin-like) domains, similarity: Contains 2 LRR (leucine-rich) repeats, subunit: Exists in a dynamic equilibrium between monomeric (low affinity) and dimeric (high affinity) structures. Binds SH2B2. Interacts with SQSTM1 and KIDINS220, tissue specificity: Isoform TrkB is widely expressed, mainly in the nervous tissue. In the CNS, expression is observed in the cerebral cortex, hippocampus, thalamus, choroid plexus, granular layer of the cerebellum, brain stem, and spinal cord. In the peripheral nervous system, it is expressed in many cranial ganglia, the ophthalmic nerve, the vestibular system, multiple facial structures, the submaxillary glands, and dorsal root ganglia. Isoform TrkB-T1 is expressed in multiple tissues, mainly in brain, pancreas, kidney and heart. Isoform TrkB-T-Shc is predominantly expressed in brain,

## Research Area

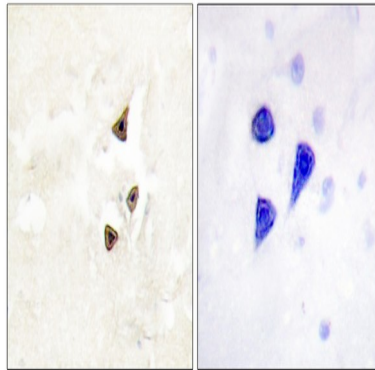
MAPK\_ERK\_Growth; MAPK\_G\_Protein; Neurotrophin;

## Image Data

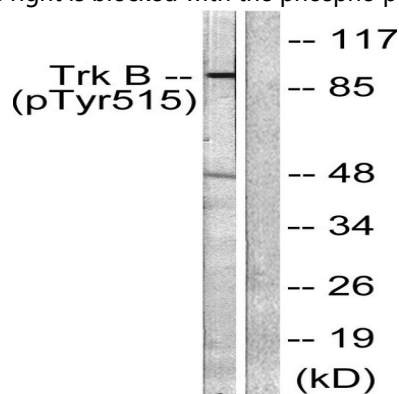


Enzyme-Linked Immunosorbent Assay (Phospho-ELISA) for Immunogen Phosphopeptide (Phospho-left) and Non-Phosphopeptide (Phospho-right), using Trk B (Phospho-Tyr515) Antibody

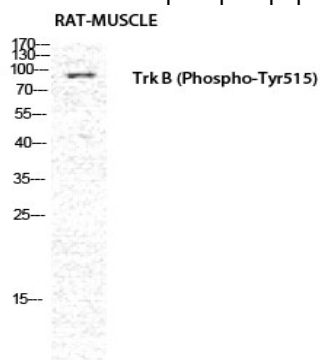
**Product Name: Trk B (phospho Tyr516) Rabbit Polyclonal Antibody**  
**Catalog #: APRab05584**



Immunohistochemistry analysis of paraffin-embedded human brain, using Trk B (Phospho-Tyr515) Antibody. The picture on the right is blocked with the phospho peptide.



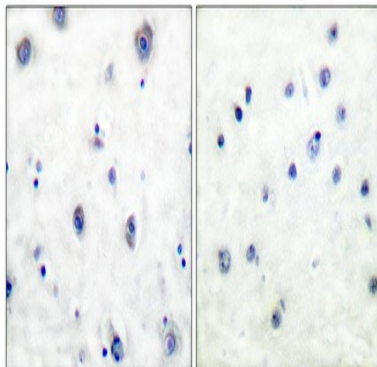
Western blot analysis of lysates from NIH/3T3 cells, using Trk B (Phospho-Tyr515) Antibody. The lane on the right is blocked with the phospho peptide.



Western Blot analysis of RAT-MUSCLE cells using Phospho-Trk B (Y516) Polyclonal Antibody diluted at 1: 1000

**Product Name: Trk B (phospho Tyr516) Rabbit  
Polyclonal Antibody  
Catalog #: AP Rab05584**

---



Immunohistochemical analysis of paraffin-embedded Human breast cancer. Antibody was diluted at 1:100 (4°, overnight) . High-pressure and temperature Tris-EDTA, pH 8.0 was used for antigen retrieval. Negative control (right) obtained from antibody was pre-absorbed by immunogen peptide.

## **Note**

For research use only.