

Product Name: Tensin-2 (phospho Tyr483) Rabbit Polyclonal Antibody
Catalog #: APRab05543

Summary

Production Name	Tensin-2 (phospho Tyr483) Rabbit Polyclonal Antibody
Description	Rabbit Polyclonal Antibody
Host	Rabbit
Application	ELISA, WB,
Reactivity	Human, Mouse

Performance

Conjugation	Unconjugated
Modification	Phospho Antibody
Isotype	IgG
Clonality	Polyclonal
Form	Liquid
Storage	Store at 4°C short term. Aliquot and store at -20°C long term. Avoid freeze/thaw cycles.
Buffer	Liquid in PBS containing 50% glycerol, 0.5% BSA and 0.02% New type preservative N.
Purification	Affinity purification

Immunogen

Gene Name	TENC1
Alternative Names	TENC1; KIAA1075; TNS2; Tensin-like C1 domain-containing phosphatase; C1 domain-containing phosphatase and tensin homolog; C1-TEN; Tensin-2
Gene ID	23371.0
SwissProt ID	Q63HR2.Synthesized phospho-peptide around the phosphorylation site of human Tensin-2 (phospho Tyr483)

Application

Dilution Ratio	WB 1:500 - 1:2000. ELISA: 1:10000. Not yet tested in other applications.
Molecular Weight	152kD

Product Name: Tensin-2 (phospho Tyr483) Rabbit Polyclonal Antibody
Catalog #: APRab05543

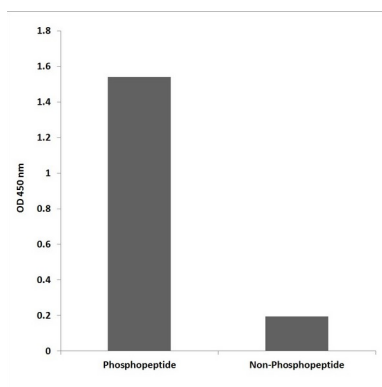


Background

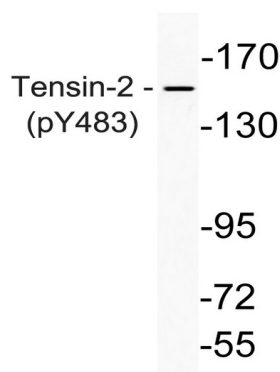
The protein encoded by this gene belongs to the tensin family. Tensin is a focal adhesion molecule that binds to actin filaments and participates in signaling pathways. This protein plays a role in regulating cell migration. Alternative splicing occurs at this locus and three transcript variants encoding three distinct isoforms have been identified. [provided by RefSeq, Jul 2008],function:Regulates cell motility and proliferation. May have phosphatase activity. Reduces AKT1 phosphorylation. Lowers AKT1 kinase activity and interferes with AKT1 signaling.,similarity:Contains 1 C2 tensin-type domain.,similarity:Contains 1 phorbol-ester/DAG-type zinc finger.,similarity:Contains 1 phosphatase tensin-type domain.,similarity:Contains 1 SH2 domain.,subcellular location:Detected at the end of actin stress fibers.,subunit:Interacts with AXL.,tissue specificity:Detected in heart, kidney, brain, thymus, spleen, liver, placenta, lung, skeletal muscle and small intestine.,

Research Area

Image Data

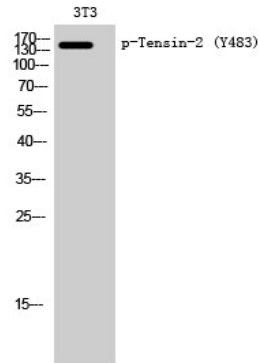


Enzyme-Linked Immunosorbent Assay (Phospho-ELISA) for Immunogen Phosphopeptide (Phospho-left) and Non-Phosphopeptide (Phospho-right) , using Tensin-2 (Phospho-Tyr483) Antibody

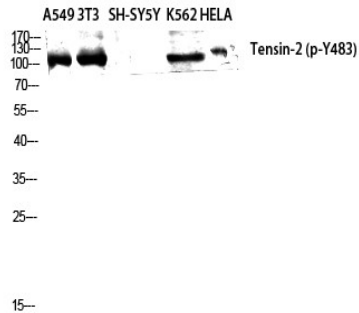


Product Name: Tensin-2 (phospho Tyr483) Rabbit Polyclonal Antibody
Catalog #: APRab05543

Western blot analysis of lysate from K562 cells, using phospho-Tensin-2 (Phospho-Tyr483) antibody .



Western Blot analysis of 3T3 cells using Phospho-Tensin-2 (Y483) Polyclonal Antibody diluted at 1: 2000



Western Blot analysis of A549 NIH-3T3 SH-SY5Y K562 HELA cells using Phospho-Tensin-2 (Y483) Polyclonal Antibody diluted at 1: 2000

Note

For research use only.