

**Product Name: Smad3 (phospho Ser208) Rabbit Polyclonal Antibody**  
**Catalog #: APRab05446**

---

## Summary

<b>Production Name</b>	Smad3 (phospho Ser208) Rabbit Polyclonal Antibody
<b>Description</b>	Rabbit Polyclonal Antibody
<b>Host</b>	Rabbit
<b>Application</b>	ELISA,IHC,WB,
<b>Reactivity</b>	Human,Mouse,Rat

## Performance

<b>Conjugation</b>	Unconjugated
<b>Modification</b>	Phospho Antibody
<b>Isotype</b>	IgG
<b>Clonality</b>	Polyclonal
<b>Form</b>	Liquid
<b>Storage</b>	Store at 4°C short term. Aliquot and store at -20°C long term. Avoid freeze/thaw cycles.
<b>Buffer</b>	Liquid in PBS containing 50% glycerol, 0.5% BSA and 0.02% New type preservative N.
<b>Purification</b>	Affinity purification

## Immunogen

<b>Gene Name</b>	SMAD3 SMAD3; MADH3; Mothers against decapentaplegic homolog 3; MAD homolog 3;
<b>Alternative Names</b>	Mad3; Mothers against DPP homolog 3; hMAD-3; JV15-2; SMAD family member 3; SMAD 3; Smad3; hSMAD3
<b>Gene ID</b>	4088.0
<b>SwissProt ID</b>	P84022.The antiserum was produced against synthesized peptide derived from human Smad3 around the phosphorylation site of Ser208. AA range:174-223

## Application

<b>Dilution Ratio</b>	WB 1:500 - 1:2000. IHC 1:100 - 1:300. ELISA: 1:10000..
<b>Molecular Weight</b>	40kD

---

**Product Name: Smad3 (phospho Ser208) Rabbit Polyclonal Antibody**  
**Catalog #: AP Rab05446**

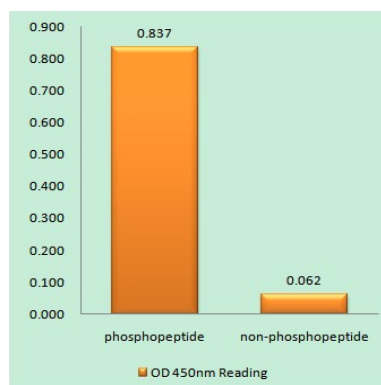
## Background

The protein encoded by this gene belongs to the SMAD, a family of proteins similar to the gene products of the *Drosophila* gene *mothers against decapentaplegic* (Mad) and the *C. elegans* gene *Sma*. SMAD proteins are signal transducers and transcriptional modulators that mediate multiple signaling pathways. This protein functions as a transcriptional modulator activated by transforming growth factor-beta and is thought to play a role in the regulation of carcinogenesis. [provided by RefSeq, Apr 2009], disease: Defects in SMAD3 may be a cause of colorectal cancer (CRC) [MIM:114500], domain: The MH2 domain is sufficient to carry protein nuclear export, function: Transcriptional modulator activated by TGF-beta (transforming growth factor) and activin type 1 receptor kinase. SMAD3 is a receptor-regulated SMAD (R-SMAD), PTM: Phosphorylated on serine by TGF-beta and activin type 1 receptor kinases, similarity: Belongs to the dwarfin/SMAD family, similarity: Contains 1 MH1 (MAD homology 1) domain, similarity: Contains 1 MH2 (MAD homology 2) domain, subcellular location: In the cytoplasm in the absence of ligand. Migration to the nucleus when complexed with Smad4, subunit: Interacts with HGS. Interacts with NEDD4L in response to TGF-beta. Interacts with TTRAP (By similarity). Interacts with SARA (SMAD anchor for receptor activation); form trimers with another SMAD3 and the co-SMAD SMAD4. Interacts with JUN/FOS, vitamin D receptor, homeobox protein TGIF and TGIF2, PEBP2-alpha C subunit, CREB-binding protein (CBP), p300, SKI, SNON, ATF2, SMURF2, AIP1, DACH1 and TGFB11. Part of a complex consisting of AIP1, ACVR2A, ACVR1B and SMAD3. Found in a complex with SMAD2 and TRIM33 upon addition of TGF-beta. Interacts with SMAD2 and TRIM33. Found in a complex with SMAD3, Ran and XPO4. Interacts with XPO4. Interacts with LBXCOR1 and CORL2,

## Research Area

Cell\_Cycle\_G1S; Cell\_Cycle\_G2M\_DNA; WNT; WNT-T CELL; TGF-beta; Adherens\_Junction; Pathways in cancer; Colorectal cancer; Pancreatic cancer; Chronic myeloid leukemia;

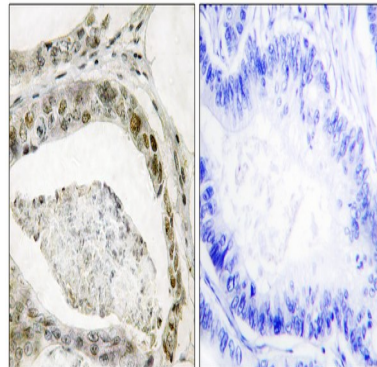
## Image Data



Enzyme-Linked Immunosorbent Assay (Phospho-ELISA) for Immunogen Phosphopeptide (Phospho-left) and Non-

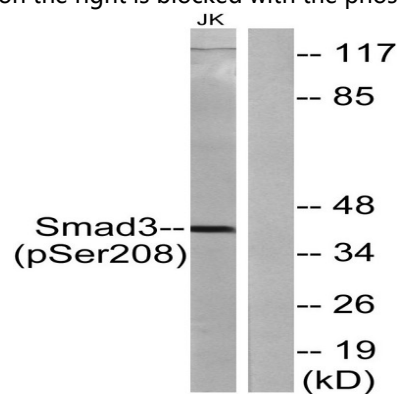
**Product Name: Smad3 (phospho Ser208) Rabbit Polyclonal Antibody**  
**Catalog #: AP Rab05446**

Phosphopeptide (Phospho-right) , using Smad3 (Phospho-Ser208) Antibody

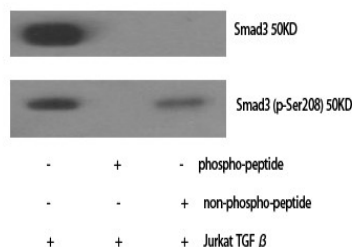


Immunohistochemistry analysis of paraffin-embedded human colon carcinoma, using Smad3 (Phospho-Ser208) Antibody.

The picture on the right is blocked with the phospho peptide.



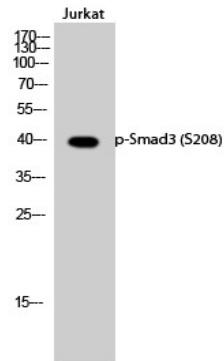
Western blot analysis of lysates from Jurkat cells, using Smad3 (Phospho-Ser208) Antibody. The lane on the right is blocked with the phospho peptide.



Western Blot analysis of various cells using Phospho-Smad3 (S208) Polyclonal Antibody

**Product Name: Smad3 (phospho Ser208) Rabbit  
Polyclonal Antibody  
Catalog #: APRab05446**

---



Western Blot analysis of Jurkat cells using Phospho-Smad3 (S208) Polyclonal Antibody

### Note

For research use only.