

**Product Name: Raf-B (phospho Thr753) Rabbit Polyclonal Antibody**  
**Catalog #: APRab05346**

---

## Summary

<b>Production Name</b>	Raf-B (phospho Thr753) Rabbit Polyclonal Antibody
<b>Description</b>	Rabbit Polyclonal Antibody
<b>Host</b>	Rabbit
<b>Application</b>	WB,ELISA
<b>Reactivity</b>	Human,Mouse,Rat

## Performance

<b>Conjugation</b>	Unconjugated
<b>Modification</b>	Phospho Antibody
<b>Isotype</b>	IgG
<b>Clonality</b>	Polyclonal
<b>Form</b>	Liquid
<b>Storage</b>	Store at 4°C short term. Aliquot and store at -20°C long term. Avoid freeze/thaw cycles.
<b>Buffer</b>	Liquid in PBS containing 50% glycerol, 0.5% BSA and 0.02% New type preservative N.
<b>Purification</b>	Affinity purification

## Immunogen

<b>Gene Name</b>	BRAF
<b>Alternative Names</b>	BRAF; BRAF1; RAFB1; Serine/threonine-protein kinase B-raf; Proto-oncogene B-Raf; p94; v-Raf murine sarcoma viral oncogene homolog B1
<b>Gene ID</b>	673.0
<b>SwissProt ID</b>	P15056.The antiserum was produced against synthesized peptide derived from human B-Raf around the phosphorylation site of Thr753. AA range:717-766

## Application

<b>Dilution Ratio</b>	WB 1:500-2000 ELISA 2000-20000
<b>Molecular Weight</b>	85kD

**Product Name: Raf-B (phospho Thr753) Rabbit  
Polyclonal Antibody  
Catalog #: AP Rab05346**

---

## Background

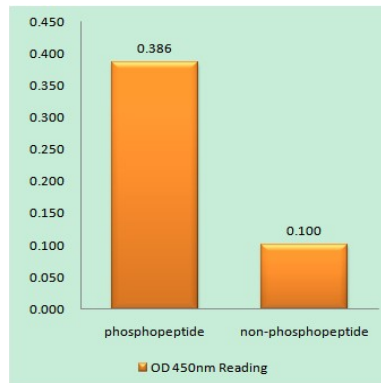
This gene encodes a protein belonging to the raf/mil family of serine/threonine protein kinases. This protein plays a role in regulating the MAP kinase/ERKs signaling pathway, which affects cell division, differentiation, and secretion. Mutations in this gene are associated with cardiofaciocutaneous syndrome, a disease characterized by heart defects, mental retardation and a distinctive facial appearance. Mutations in this gene have also been associated with various cancers, including non-Hodgkin lymphoma, colorectal cancer, malignant melanoma, thyroid carcinoma, non-small cell lung carcinoma, and adenocarcinoma of lung. A pseudogene, which is located on chromosome X, has been identified for this gene. [provided by RefSeq, Jul 2008], catalytic activity: ATP + a protein = ADP + a phosphoprotein., cofactor: Binds 2 zinc ions per subunit., disease: Defects in BRAF are a cause of cardiofaciocutaneous syndrome (CFC syndrome) [MIM:115150]; also known as cardio-facio-cutaneous syndrome. CFC syndrome is characterized by a distinctive facial appearance, heart defects and mental retardation. Heart defects include pulmonic stenosis, atrial septal defects and hypertrophic cardiomyopathy. Some affected individuals present with ectodermal abnormalities such as sparse, friable hair, hyperkeratotic skin lesions and a generalized ichthyosis-like condition. Typical facial features are similar to Noonan syndrome. They include high forehead with bitemporal constriction, hypoplastic supraorbital ridges, downslanting palpebral fissures, a depressed nasal bridge, and posteriorly angulated ears with prominent helices. The inheritance of CFC syndrome is autosomal dominant., disease: Defects in BRAF are involved in a wide range of cancers., disease: Defects in BRAF are involved in lung cancer [MIM:211980], disease: Defects in BRAF are involved in non-Hodgkin lymphoma (NHL) [MIM:605027]. NHL is a cancer that starts in cells of the lymph system, which is part of the body's immune system. NHLs can occur at any age and are often marked by enlarged lymph nodes, fever and weight loss., disease: Defects in BRAF may be a cause of colorectal cancer (CRC) [MIM:114500], function: Involved in the transduction of mitogenic signals from the cell membrane to the nucleus. May play a role in the postsynaptic responses of hippocampal neuron., similarity: Belongs to the protein kinase superfamily. TKL Ser/Thr protein kinase family. RAF subfamily., similarity: Contains 1 phorbol-ester/DAG-type zinc finger., similarity: Contains 1 protein kinase domain., similarity: Contains 1 RBD (Ras-binding) domain., subunit: Interacts with RIT1., tissue specificity: Brain and testis.,

## Research Area

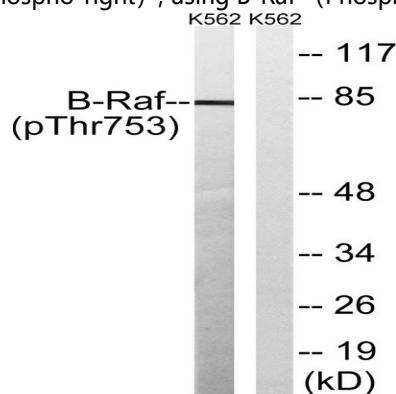
Regulation of Actin Dynamics; MAPK\_ERK\_Growth; MAPK\_G\_Protein; Cell Growth; mTOR

## Image Data

**Product Name: Raf-B (phospho Thr753) Rabbit Polyclonal Antibody**  
**Catalog #: APRab05346**



Enzyme-Linked Immunosorbent Assay (Phospho-ELISA) for Immunogen Phosphopeptide (Phospho-left) and Non-Phosphopeptide (Phospho-right), using B-Raf (Phospho-Thr753) Antibody



Western blot analysis of lysates from K562 cells treated with EGF 200ng/ml 30', using B-Raf (Phospho-Thr753) Antibody. The lane on the right is blocked with the phospho peptide.

## Note

For research use only.