

**Product Name: PP2A-C $\alpha$  (phospho Tyr307) Rabbit Polyclonal Antibody**  
**Catalog #: APRab05295**

---

## Summary

<b>Production Name</b>	PP2A-C $\alpha$ (phospho Tyr307) Rabbit Polyclonal Antibody
<b>Description</b>	Rabbit Polyclonal Antibody
<b>Host</b>	Rabbit
<b>Application</b>	IF,IHC,WB,ELISA
<b>Reactivity</b>	Human,Mouse,Rat

## Performance

<b>Conjugation</b>	Unconjugated
<b>Modification</b>	Phospho Antibody
<b>Isotype</b>	IgG
<b>Clonality</b>	Polyclonal
<b>Form</b>	Liquid
<b>Storage</b>	Store at 4°C short term. Aliquot and store at -20°C long term. Avoid freeze/thaw cycles.
<b>Buffer</b>	Liquid in PBS containing 50% glycerol, 0.5% BSA and 0.02% New type preservative N.
<b>Purification</b>	Affinity purification

## Immunogen

<b>Gene Name</b>	PPP2CA
<b>Alternative Names</b>	PPP2CA; Serine/threonine-protein phosphatase 2A catalytic subunit alpha isoform; PP2A-alpha; Replication protein C; RP-C
<b>Gene ID</b>	5515.0
<b>SwissProt ID</b>	P67775.The antiserum was produced against synthesized peptide derived from human PP2A-alpha around the phosphorylation site of Tyr307. AA range:260-309

## Application

<b>Dilution Ratio</b>	WB 1:500 - 1:2000. IHC 1:100 - 1:300. IF 1:200 - 1:1000. ELISA: 1:5000. Not yet tested in other applications.
-----------------------	---------------------------------------------------------------------------------------------------------------

**Product Name: PP2A-C $\alpha$  (phospho Tyr307) Rabbit Polyclonal Antibody**  
**Catalog #: AP Rab05295**

---

**Molecular Weight**      35kD

## Background

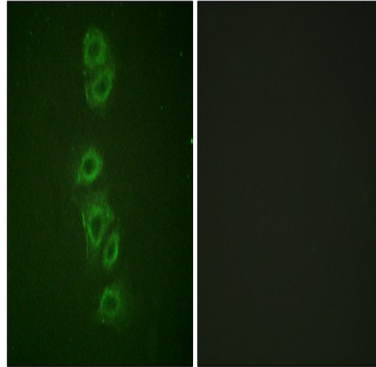
This gene encodes the phosphatase 2A catalytic subunit. Protein phosphatase 2A is one of the four major Ser/Thr phosphatases, and it is implicated in the negative control of cell growth and division. It consists of a common heteromeric core enzyme, which is composed of a catalytic subunit and a constant regulatory subunit, that associates with a variety of regulatory subunits. This gene encodes an alpha isoform of the catalytic subunit. [provided by RefSeq, Jul 2008], catalytic activity: A phosphoprotein + H<sub>2</sub>O = a protein + phosphate., cofactor: Binds 1 iron ion per subunit., cofactor: Binds 1 manganese ion per subunit., function: PP2A can modulate the activity of phosphorylase B kinase casein kinase 2, mitogen-stimulated S6 kinase, and MAP-2 kinase. Can dephosphorylate SV40 large T antigen and p53. Dephosphorylates SV40 large T antigen, preferentially on serine residues 120, 123, 677, and perhaps 679. The C subunit was most active, followed by the AC form, which was more active than the ABC form, and activity of all three forms was strongly stimulated by manganese, and to a lesser extent by magnesium. Dephosphorylation by the AC form, but not C or ABC form is inhibited by small T antigen., PTM: Phosphorylation of either threonine (by autophosphorylation-activated protein kinase) or tyrosine results in inactivation of the phosphatase. Auto-dephosphorylation has been suggested as a mechanism for reactivation., PTM: Reversibly methyl esterified on Leu-309. Carboxyl methylation may play a role in holoenzyme assembly. It varies during the cell cycle., similarity: Belongs to the PPP phosphatase family., similarity: Belongs to the PPP phosphatase family. PP-1 subfamily., subcellular location: In prometaphase cells, but not in anaphase cells, localizes at centromeres. During mitosis, also found at spindle poles., subunit: PP2A consists of a common heterodimeric core enzyme, composed of a 36 kDa catalytic subunit (subunit C) and a 65 kDa constant regulatory subunit (PR65 or subunit A), that associates with a variety of regulatory subunits. Proteins that associate with the core dimer include three families of regulatory subunits B (the R2/B/PR55/B55, R3/B''/PR72/PR130/PR59 and R5/B'/B56 families), the 48 kDa variable regulatory subunit, viral proteins, and cell signaling molecules. Interacts with NXN; the interaction is direct (By similarity). May indirectly interact with SGOL1, most probably through regulatory B56 subunits.,

## Research Area

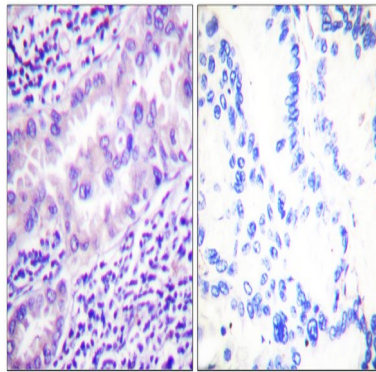
Oocyte meiosis; WNT; WNT-T CELL TGF-beta; Tight junction; Long-term depression;

## Image Data

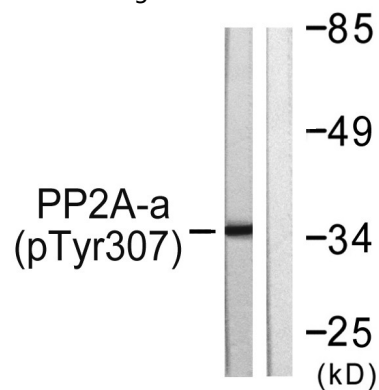
**Product Name: PP2A-C $\alpha$  (phospho Tyr307) Rabbit Polyclonal Antibody**  
**Catalog #: APRab05295**



Immunofluorescence analysis of A549 cells, using PP2A-alpha (Phospho-Tyr307) Antibody. The picture on the right is blocked with the phospho peptide.

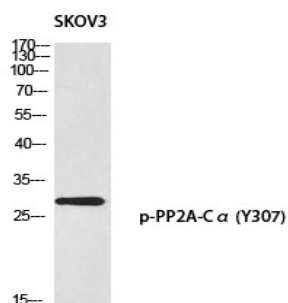


Immunohistochemistry analysis of paraffin-embedded human lung carcinoma, using PP2A-alpha (Phospho-Tyr307) Antibody. The picture on the right is blocked with the phospho peptide.

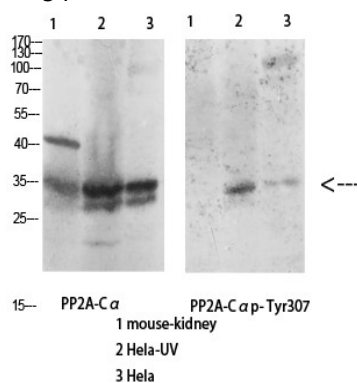


Western blot analysis of lysates from A549 cells, using PP2A-alpha (Phospho-Tyr307) Antibody. The lane on the right is blocked with the phospho peptide.

**Product Name: PP2A-C $\alpha$  (phospho Tyr307) Rabbit Polyclonal Antibody**  
**Catalog #: APRab05295**



Western blot analysis of SKOV3 using p-PP2A-C $\alpha$  (Y307) antibody. Antibody was diluted at 1:1000



Western Blot analysis of various cells using Antibody diluted at 1:1000. Secondary antibody was diluted at 1:20000

## Note

For research use only.